

**D-SERIES CRAWLER EXCAVATORS**  
**CX490D / CX500D ME**  
**STAGE V**

**CASE**  
CONSTRUCTION



**IT'S TIME**  
**FOR MORE**

[www.casece.com](http://www.casece.com)  
**EXPERTS FOR THE REAL WORLD**  
**SINCE 1842**

# CX D-SERIES

## CX490D

### ENGINE

Model	ISUZU VE-6UZ1X
Type	Water-cooled, 4-cycle diesel, 6-cylinder in line, High pressure common rail system (electric control). Turbocharger with air cooled intercooler, SCR & DPD system.
Emissions level	EU N°2016/1628 STAGE V
Number of cylinders/Displacement (l)	6 / 9.84
Bore and stroke (mm)	120 x 145
Rated flywheel horse power	
ISO 14396	270 kW / 362 hp at 2000 min <sup>-1</sup>
with fan-pump	245 kW / 328 hp at 2000 min <sup>-1</sup>
Maximum torque	
ISO 14396	1567 N-m at 1300 min <sup>-1</sup>

### HYDRAULIC SYSTEM

Main pumps	2 variable displacement axial piston pumps with regulating system
Max. oil flow (l/min)	2 x 364 at 2000 min <sup>-1</sup>
Working circuit pressure	
Boom/Arm/Bucket (MPa)	31.4
	34.3 with auto power up
Swing circuit (MPa)	29.4
Travel circuit (MPa)	34.3
Pilot pump	1 gear pump
Max. oil flow (l/min)	30
Working circuit pressure (MPa)	3.9
Boom Cylinders	
Bore (mm)	170
Stroke (mm)	1550
Arm Cylinders	
Bore (mm)	190
Stroke (mm)	1920
Bucket Cylinders	
Bore (mm)	165
Stroke (mm)	1285

### SWING

Swing Motor	Fixed displacement axial piston motor
Maximum swing speed (min <sup>-1</sup> )	6.6
Swing torque (kNm)	150

### FILTERS

Suction filter (µm)	105
Return filter (µm)	6
Pilot line filter (µm)	8

### ELECTRICAL SYSTEM

Voltage (V)	24
Alternator (Amp)	90
Starter (V/kW)	24/5.5
Battery	2 X 12 V - 128 Ah/5HR

### UNDERCARRIAGE

Travel motor	variable displacement axial piston motor
Travel speeds	
High (km/h - automatic travel speed shifting)	5.3
Low (km/h)	3.2
Drawbar pull (kN)	339
	(Fixed sideframe undercarriage)

Number of carrier rollers	
Fixed sideframe undercarriage	2 (each side)
Retractable sideframe undercarriage	3 (each side)
Number of track rollers (each side)	9
Number of shoes (each side)	50

### SOUND LEVEL

External guaranteed sound level (EU Directive 2000/14/EC)	LwA 105 dB(A)
Operator cab sound pressure level (ISO 6396)	LpA 70 dB(A)

### CIRCUIT AND COMPONENT CAPACITIES

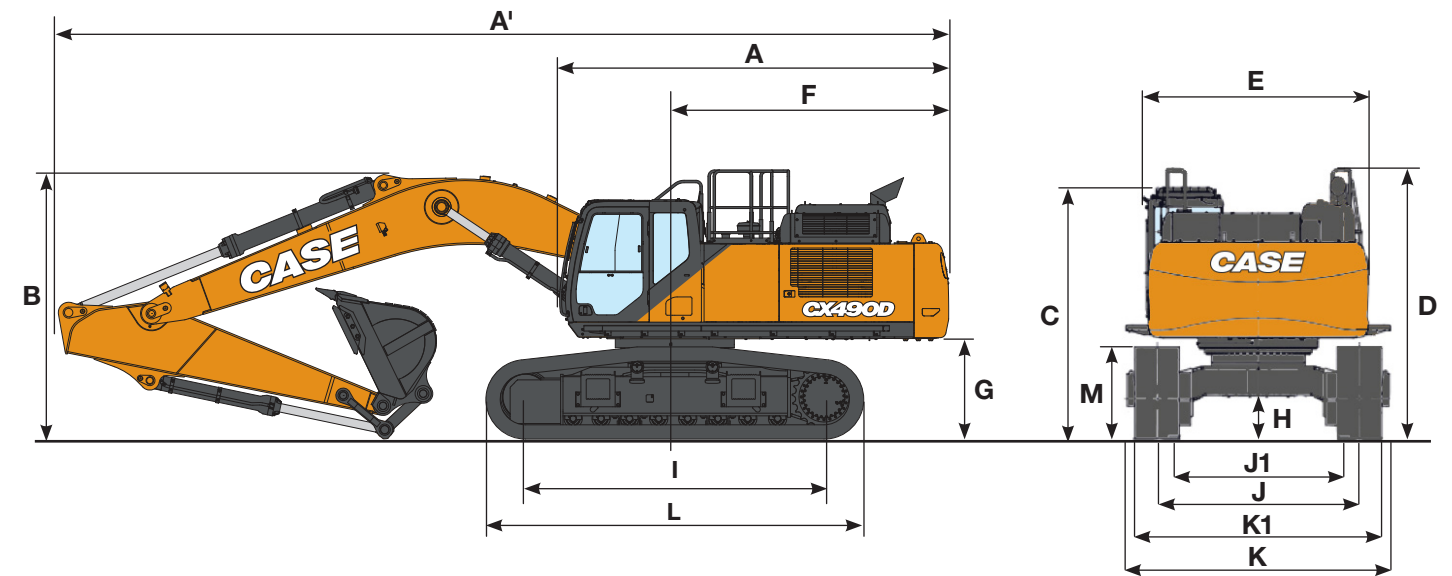
Fuel tank (l)	650
Hydraulic system (l)	460
Hydraulic tank (l)	230
Adblue tank (l)	152

### WEIGHT AND GROUND PRESSURE

(with 3.38 m Arm, 2.0 m<sup>3</sup> HD bucket, 600 mm grouser shoes, operator, lubricant, coolant, full fuel tank and FOPS protection level 2.)

CX490D	FIXED SIDEFRAME UNDERCARRIAGE	RETRACTABLE SIDEFRAME UNDERCARRIAGE
Weight	49400 kg	50900 kg
Ground Pressure	0.085 MPa	0.087 MPa
Counterweight	10000 kg	10000 kg

# SPECIFICATIONS



### GENERAL DIMENSIONS

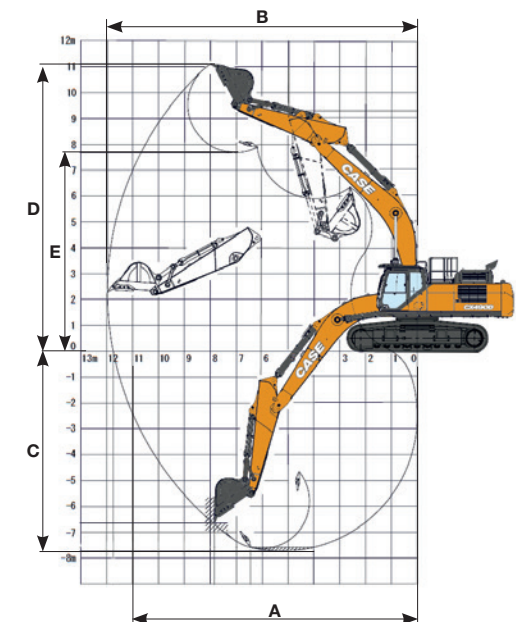
	FIXED SIDEFRAME UNDERCARRIAGE		RETRACTABLE SIDEFRAME UNDERCARRIAGE	
	Arm 3.40 m	Arm 2.50 m	Arm 3.40 m	Arm 2.50 m
A Overall length (without attachment)	mm 6450	6450	6450	6450
A' Overall length (with attachment)	mm 12090	12110	12060	12090
B Overall height (with attachment)	mm 3650	3670	3680	3720
C Cab height	mm 3400	3400	3550	3550
D Overall height (to top of guardrail)	mm 3550	3550	3700	3700
E Upper structure overall width (without catwalks)	mm 3060	3060	3060	3060
Upper structure overall width (with catwalks)	mm 3590	3590	3590	3590
F Swing (rear end) radius	mm 3730	3730	3730	3730
G Clearance height under upper structure	mm 1330	1330	1480	1480
H Minimum ground clearance	mm 535	535	720	720
I Wheel base (center to center of wheels)	mm 4400	4400	4400	4400
L Crawler overall length	mm 5450	5450	5450	5450
M Crawler tracks height	mm 1240	1240	1220	1220
J Track gauge (extended)	mm 2750	2750	2890	2890
J1 Track gauge (retracted)	mm -	-	2390	2390
K Undercarriage overall width (extended with 600 mm shoes)	mm 3350	3350	3490	3490
K1 Undercarriage overall width (retracted with 600 mm shoes)	mm -	-	2990	2990

### PERFORMANCE DATA

	FIXED SIDEFRAME UNDERCARRIAGE		RETRACTABLE SIDEFRAME UNDERCARRIAGE	
	Arm 3.40 m	Arm 2.50 m	Arm 3.40 m	Arm 2.50 m
Boom length	mm 6980	6980	6980	6980
Bucket radius	mm 1840	1840	1840	1840
Bucket wrist action	° 176	176	176	176
A Maximum reach at GRP	mm 11750	10980	11720	10980
B Maximum reach	mm 11970	11220	11970	11220
C Max. digging depth	mm 7720	6870	7570	6720
D Max. digging height	mm 11100	10850	11250	11000
E Max. dumping height	mm 7690	7410	7840	7560

### DIGGING FORCE (ISO 6015)

	Arm 3.40 m	Arm 2.50 m
Arm digging force	kN 201	246
with Auto power up	kN 220	269
Bucket digging force	kN 247	247
with Auto power up	kN 270	270

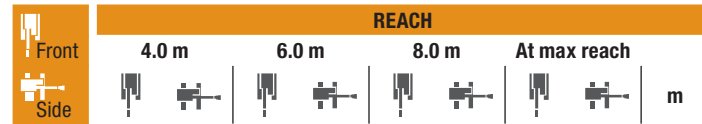




# LIFTING CAPACITY

## CX490D

# BUCKETS



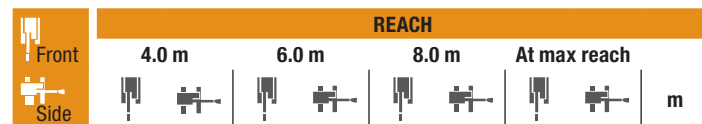
LC - 2.50 m length, 600 mm shoes. Max reach 9.38 m

Height (m)	4.0 m	6.0 m	8.0 m	At max reach	Capacity (m³)	Weight (kg)	Reach (m)		
8.0 m					12390*	11360	7.41		
6.0 m		14290*	14290*	12110*	9860	8730	6.06		
4.0 m		16600*	14230	12860*	9440	11670*	7600	9.22	
2.0 m		18400*	13240	13610*	8990	11670*	7210	9.37	
0 m		18540*	12820	13680*	8720	11700*	7410	9.09	
-2.0 m	22160*	22160*	16940*	12850	12320*	8770	11520*	8370	8.32
-4.0 m	16770*	16770*	12870*	12870*		10480*	10480*	6.09	



LC - 3.40 m length, 600 mm shoes. Max reach 10.10 m

Height (m)	2.0 m	4.0 m	6.0 m	8.0 m	10.0 m	At max reach	Capacity (m³)	Weight (kg)	Reach (m)
8.0 m							10740*	10240*	8.34
6.0 m							11040*	10020	9.42
4.0 m			15280*	14580	12020*	9520	9660*	6710	9.99
2.0 m			17570*	13410	13050*	8980	10560	6490	10.13
0 m		13260*	13260*	18470*	12750	13540*	8610		9.87
-2.0 m	13250*	13250*	24340*	23560	17680*	12600	12970*	8500	9.16
-4.0 m		20300*	20300*	14860*	12850		10330*	8320	7.09



RTC - 2.50 m length, 600 mm shoes. Max reach 9.38 m

Height (m)	4.0 m	6.0 m	8.0 m	At max reach	Capacity (m³)	Weight (kg)	Reach (m)		
8.0 m					12390*	12170	7.41		
6.0 m		14290*	14290*	12110*	10590	11820*	9380	8.06	
4.0 m		16600*	15340	12860*	10150	11670*	8190	9.22	
2.0 m		18400*	14340	13610*	9700	11670*	7790	9.37	
0 m		18540*	13920	13680*	9440	11700*	8000	9.09	
-2.0 m	22160*	22160*	16940*	13950	12320*	9480	11520*	9050	8.32
-4.0 m	16770*	16770*	12870*	12870*		10480*	10480*	6.09	



RTC - 3.40 m length, 600 mm shoes. Max reach 10.10 m

Height (m)	2.0 m	4.0 m	6.0 m	8.0 m	10.0 m	At max reach	Capacity (m³)	Weight (kg)	Reach (m)
8.0 m							10740*	10740*	8.34
6.0 m							11040*	10750	9.42
4.0 m			15280*	15280*	12020*	10240	9660*	7230	9.99
2.0 m			17570*	14510	13050*	9700	10640*	7020	10.13
0 m		13260*	13260*	18470*	13850	13540*	9320		9.87
-2.0 m	13250*	13250*	24340*	24340*	17680*	13690	12970*	9210	9.16
-4.0 m		20300*	20300*	14860*	13950		10330*	9640	7.09

## CX490D LC

### HEAVY DUTY BUCKETS (DIRECT FIT)

CAPACITY (ISO7451 HEAPED)	WIDTH	WEIGHT	ARM 2.53 m	ARM 3.38 m
1.04 m³	900 mm	1640 kg	○	○
1.35 m³	1100 mm	1810 kg	○	○
1.50 m³	1200 mm	1940 kg	○	○
1.75 m³	1350 mm	2070 kg	○	○
2.00 m³	1500 mm	2240 kg	○	○
2.33 m³	1700 mm	2410 kg	○	●
2.50 m³	1800 mm	2500 kg	●	▲
2.66 m³	1900 mm	2670 kg	▲	■

### ROCK BUCKETS (DIRECT FIT)

CAPACITY (ISO7451 HEAPED)	WIDTH	WEIGHT	ARM 2.53 m	ARM 3.38 m
1.04 m³	900 mm	1780 kg	○	○
1.35 m³	1100 mm	1950 kg	○	○
1.50 m³	1200 mm	2090 kg	○	○
1.75 m³	1350 mm	2220 kg	○	○
2.00 m³	1500 mm	2390 kg	○	●
2.33 m³	1700 mm	2570 kg	●	●
2.50 m³	1800 mm	2650 kg	●	▲
2.66 m³	1900 mm	2830 kg	▲	■

## CX490D RTC

### HEAVY DUTY BUCKETS (DIRECT FIT)

CAPACITY (ISO7451 HEAPED)	WIDTH	WEIGHT	ARM 2.53 m	ARM 3.38 m
1.04 m³	900 mm	1640 kg	○	○
1.35 m³	1100 mm	1810 kg	○	○
1.50 m³	1200 mm	1940 kg	○	○
1.75 m³	1350 mm	2070 kg	○	○
2.00 m³	1500 mm	2240 kg	○	○
2.33 m³	1700 mm	2410 kg	○	●
2.50 m³	1800 mm	2500 kg	●	●
2.66 m³	1900 mm	2670 kg	●	▲

### ROCK BUCKETS (DIRECT FIT)

CAPACITY (ISO7451 HEAPED)	WIDTH	WEIGHT	ARM 2.53 m	ARM 3.38 m
1.04 m³	900 mm	1780 kg	○	○
1.35 m³	1100 mm	1950 kg	○	○
1.50 m³	1200 mm	2090 kg	○	○
1.75 m³	1350 mm	2220 kg	○	○
2.00 m³	1500 mm	2390 kg	○	○
2.33 m³	1700 mm	2570 kg	○	●
2.50 m³	1800 mm	2650 kg	●	●
2.66 m³	1900 mm	2830 kg	●	▲

## HEAVY DUTY BUCKETS (QUICK COUPLED)

CAPACITY (ISO7451 HEAPED)	WIDTH	WEIGHT	ARM 2.53 m	ARM 3.38 m
1.04 m³	900 mm	1640 kg	○	○
1.35 m³	1100 mm	1810 kg	○	○
1.50 m³	1200 mm	1940 kg	○	○
1.75 m³	1350 mm	2070 kg	○	●
2.00 m³	1500 mm	2240 kg	●	▲
2.33 m³	1700 mm	2410 kg	●	■
2.50 m³	1800 mm	2500 kg	■	×
2.66 m³	1900 mm	2670 kg	■	×

### ROCK BUCKETS (QUICK COUPLED)

CAPACITY (ISO7451 HEAPED)	WIDTH	WEIGHT	ARM 2.53 m	ARM 3.38 m
1.04 m³	900 mm	1780 kg	○	○
1.35 m³	1100 mm	1950 kg	○	○
1.50 m³	1200 mm	2090 kg	○	○
1.75 m³	1350 mm	2220 kg	○	●
2.00 m³	1500 mm	2390 kg	●	▲
2.33 m³	1700 mm	2570 kg	▲	■
2.50 m³	1800 mm	2650 kg	■	×
2.66 m³	1900 mm	2830 kg	■	×

## HEAVY DUTY BUCKETS (QUICK COUPLED)

CAPACITY (ISO7451 HEAPED)	WIDTH	WEIGHT	ARM 2.53 m	ARM 3.38 m
1.04 m³	900 mm	1640 kg	○	○
1.35 m³	1100 mm	1810 kg	○	○
1.50 m³	1200 mm	1940 kg	○	○
1.75 m³	1350 mm	2070 kg	○	○
2.00 m³	1500 mm	2240 kg	○	●
2.33 m³	1700 mm	2410 kg	●	▲
2.50 m³	1800 mm	2500 kg	●	■
2.66 m³	1900 mm	2670 kg	▲	■

### ROCK BUCKETS (QUICK COUPLED)

CAPACITY (ISO7451 HEAPED)	WIDTH	WEIGHT	ARM 2.53 m	ARM 3.38 m
1.04 m³	900 mm	1780 kg	○	○
1.35 m³	1100 mm	1950 kg	○	○
1.50 m³	1200 mm	2090 kg	○	○
1.75 m³	1350 mm	2220 kg	○	○
2.00 m³	1500 mm	2390 kg	○	●
2.33 m³	1700 mm	2570 kg	●	▲
2.50 m³	1800 mm	2650 kg	●	■
2.66 m³	1900 mm	2830 kg	■	×

\* The above loads (kg) are compliant to the ISO standards and refer to the excavator equipped without bucket. The indicated loads are no more than 87% of hydraulic system lift capacity or 75% of static tipping load. Values marked with an asterisk (\*) are limited by the hydraulic lifting capacity.

○ Rated material density up to 2 ton/m³ ● Rated material density up to 1.6 ton/m³ ▲ Rated material density up to 1.4 ton/m³  
■ Rated material density up to 1.2 ton/m³ × Not applicable

# CX D-SERIES

## CX500D ME

### ENGINE

Model	ISUZU VE-6UZ1X
Type	Water-cooled, 4-cycle diesel, 6-cylinder in line, High pressure common rail system (electric control). Turbocharger with air cooled intercooler, SCR system & DPD.
Emissions level	EU N°2016/1628 STAGE V
Number of cylinders/Displacement (l)	6 / 9.84
Bore and stroke (mm)	120 x 145
Rated flywheel horse power	
ISO 14396	270 kW / 362 hp at 2000 min <sup>-1</sup>
with fan-pump	245 kW / 328 hp at 2000 min <sup>-1</sup>
Maximum torque	
ISO 14396	1567 N-m at 1300 min <sup>-1</sup>

### HYDRAULIC SYSTEM

Main pumps	2 variable displacement axial piston pumps with regulating system
Max. oil flow (l/min)	2 x 364 at 2000 min <sup>-1</sup>
Working circuit pressure	
Boom/Arm/Bucket (MPa)	31.4
	34.3 with auto power up
Swing circuit (MPa)	29.4
Travel circuit (MPa)	34.3
Pilot pump	1 gear pump
Max. oil flow (l/min)	30
Working circuit pressure (MPa)	3.9
Boom Cylinders	
Bore (mm)	170
Stroke (mm)	1550
Arm Cylinders	
Bore (mm)	190
Stroke (mm)	1920
Bucket Cylinders	
Bore (mm)	170
Stroke (mm)	1335

### SWING

Swing Motor	Fixed displacement axial piston motor
Maximum swing speed (min <sup>-1</sup> )	6.6
Swing torque (kNm)	150

### FILTERS

Suction filter (µm)	105
Return filter (µm)	6
Pilot line filter (µm)	8

### ELECTRICAL SYSTEM

Voltage (V)	24
Alternator (Amp)	90
Starter (V/kW)	24/5.5
Battery	2 X 12 V - 128 Ah/5HR

### UNDERCARRIAGE

Travel motor	Variable displacement axial piston motor
Travel speeds	
High (km/h - automatic travel speed shifting)	5.3
Low (km/h)	3.2
Drawbar pull (kN)	339
	(Fixed sideframe undercarriage)

Number of carrier rollers	
Fixed sideframe undercarriage	2 (each side)
Retractable sideframe undercarriage	3 (each side)
Number of track rollers (each side)	9
Number of shoes (each side)	50

### SOUND LEVEL

External guaranteed sound level (EU Directive 2000/14/EC)	LwA 105 dB(A)
Operator cab sound pressure level (ISO 6396)	LpA 70 dB(A)

### CIRCUIT AND COMPONENT CAPACITIES

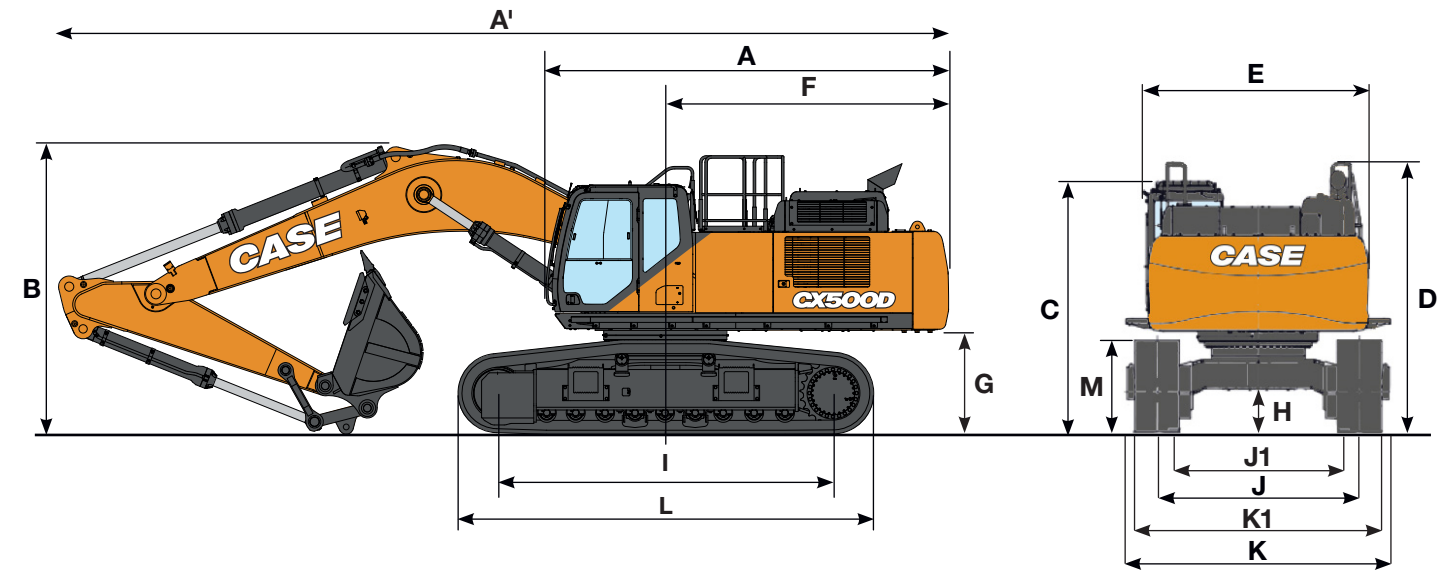
Fuel tank (l)	650
Hydraulic system (l)	460
Hydraulic tank (l)	230
Adblue tank (l)	152

### WEIGHT AND GROUND PRESSURE

(With 2.53 m arm, 3.0 m<sup>3</sup> bucket, 600 mm grouser shoes, operator, lubricant, coolant, full fuel tank and FOPS protection level 2.)

CX500D ME	FIXED SIDEFRAME UNDERCARRIAGE	RETRACTABLE SIDEFRAME UNDERCARRIAGE
Weight	49600 kg	51000 kg
Ground Pressure	0.085 MPa	0.087 MPa
Counterweight	10000 kg	10000 kg

# SPECIFICATIONS



### GENERAL DIMENSIONS

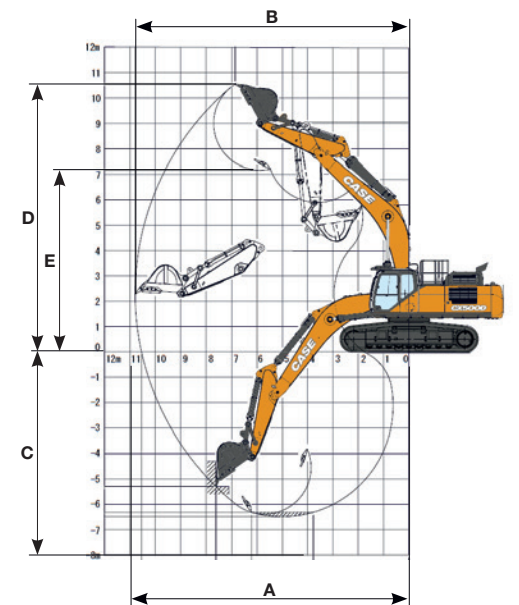
		FIXED SIDEFRAME UNDERCARRIAGE	RETRACTABLE SIDEFRAME UNDERCARRIAGE
		Arm 2.50 m	Arm 2.50 m
A Overall length (without attachment)	mm	6450	6450
A' Overall length (with attachment)	mm	11680	11660
B Overall height (with attachment)	mm	3800	3840
C Cab height	mm	3400	3550
D Overall height (to top of guardrail)	mm	3550	3700
E Upper structure overall width (without catwalks)	mm	3060	3060
Upper structure overall width (with catwalks)	mm	3590	3590
F Swing (rear end) radius	mm	3730	3730
G Clearance height under upper structure	mm	1330	1480
H Minimum ground clearance	mm	535	720
I Wheel base (center to center of wheels)	mm	4400	4400
L Crawler overall length	mm	5450	5450
M Crawler tracks height	mm	1240	1220
J Track gauge (extended)	mm	2750	2890
J1 Track gauge (retracted)	mm	-	2390
K Undercarriage overall width (extended with 600 mm shoes)	mm	3350	3490
K1 Undercarriage overall width (retracted with 600 mm shoes)	mm	-	2990

### PERFORMANCE DATA

		FIXED SIDEFRAME UNDERCARRIAGE	RETRACTABLE SIDEFRAME UNDERCARRIAGE
		Arm 2.50 m	Arm 2.50 m
Boom length	mm	6550	6550
Bucket radius	mm	1840	1840
Bucket wrist action	°	160	160
A Maximum reach at GRP	mm	10550	10520
B Maximum reach	mm	10800	10800
C Max. digging depth	mm	6490	6340
D Max. digging height	mm	10550	10700
E Max. dumping height	mm	7160	7310

### DIGGING FORCE (ISO 6015)

Arm 2.50 m		
Arm digging force	kN	245
with Auto power boost	kN	267
Bucket digging force	kN	287
with Auto power boost	kN	313





# LIFTING CAPACITY

## CX500D ME

Front Side	REACH				m
	4.0 m	6.0 m	8.0 m	At max reach	

LC - 2.50 m length, 600 mm shoes. Max reach 8.96 m

REACH	4.0 m	6.0 m	8.0 m	At max reach	Capacity (kg)	Capacity (m³)	Reach (m)	
8.0 m					13450*	13450*	6.86	
6.0 m		14610*	14610*	12740*	12690*	10330	8.14	
4.0 m		16760*	15730	13240*	10310	12460*	8.79	
2.0 m		18590*	14730	13880*	9900	12430*	8.95	
0 m		18800*	14250	13780*	9650	12410*	8.65	
-2.0 m	23000*	23000*	16970*	14250		12100*	10000	7.84
-4.0 m	16220*	16220*	11620*	11620*		10540*	10540*	6.31

Front Side	REACH				m
	4.0 m	6.0 m	8.0 m	At max reach	

RTC - 2.50 m length, 600 mm shoes. Max reach 8.96 m

REACH	4.0 m	6.0 m	8.0 m	At max reach	Capacity (kg)	Capacity (m³)	Reach (m)	
8.0 m					13450*	12930	6.86	
6.0 m		14610*	14610*	12740*	9920	12690*	9630	8.14
4.0 m		16760*	14610	13240*	9590	12460*	8290	8.79
2.0 m		18590*	13620	13880*	9180	12430*	7840	8.95
0 m		18800*	13150	13780*	8940	12410*	8080	8.65
-2.0 m	23000*	23000*	16970*	13150		12100*	9270	7.84
-4.0 m	16220*	16220*	11620*	11620*		10540*	10540*	6.31

### CX500D LC

#### ROCK BUCKETS (DIRECT FIT)

CAPACITY (ISO7451 HEAPED)	WIDTH	WEIGHT	ARM 2.53 m
1.75 m³	1350 mm	2270 kg	○
2.00 m³	1500 mm	2380 kg	○
2.33 m³	1700 mm	2500 kg	○
2.50 m³	1800 mm	2640 kg	⊙
2.78 m³	2000 mm	2900 kg	●

#### XTREME ROCK BUCKETS (DIRECT FIT)

CAPACITY (ISO7451 HEAPED)	WIDTH	WEIGHT	ARM 2.53 m
1.75 m³	1350 mm	2450 kg	○
2.00 m³	1500 mm	2570 kg	○
2.33 m³	1700 mm	2700 kg	○
2.50 m³	1800 mm	2850 kg	⊙
2.78 m³	2000 mm	3150 kg	●

### CX500D RTC

#### ROCK BUCKETS (DIRECT FIT)

CAPACITY (ISO7451 HEAPED)	WIDTH	WEIGHT	ARM 2.53 m
1.75 m³	1350 mm	2270 kg	○
2.00 m³	1500 mm	2380 kg	○
2.33 m³	1700 mm	2500 kg	○
2.50 m³	1800 mm	2640 kg	○
2.78 m³	2000 mm	2900 kg	⊙

#### XTREME ROCK BUCKETS (DIRECT FIT)

CAPACITY (ISO7451 HEAPED)	WIDTH	WEIGHT	ARM 2.53 m
1.75 m³	1350 mm	2450 kg	○
2.00 m³	1500 mm	2570 kg	○
2.33 m³	1700 mm	2700 kg	○
2.50 m³	1800 mm	2850 kg	○
2.78 m³	2000 mm	3150 kg	⊙

○ Rated material density up to 2 ton/m³ ⊙ Rated material density up to 1.8 ton/m³ ● Rated material density up to 1.6 ton/m³

\* The above loads (kg) are compliant to the ISO standards and refer to the excavator equipped without bucket. The indicated loads are no more than 87% of hydraulic system lift capacity or 75% of static tipping load. Values marked with an asterisk (\*) are limited by the hydraulic lifting capacity.

