

D-SERIES CRAWLER EXCAVATORS
CX350D / CX370D / CX370D 2 PIECE BOOM
STAGE V

CASE
CONSTRUCTION



IT'S TIME
FOR MORE

www.casece.com
EXPERTS FOR THE REAL WORLD
SINCE 1842

CX D-SERIES

CX350D - CX370D

SPECIFICATIONS

ENGINE

Model _____ ISUZU VE-6HK1X
 Type _____ Water-cooled, 4-cycle diesel, 6-cylinder in line,
 High pressure common rail system (electric control), Turbocharger
 with air cooled intercooler, SCR system & DPD system.
 Emission level _____ REG. EU 2016/1628 STAGE V
 Number of cylinders / Displacement (l) _____ 6 / 7.79
 Bore & stroke (mm) _____ 115 x 125
 Rated flywheel horse power _____
 SAE J1349, ISO 9249 _____ 200 kW / 268 hp at 1900 min⁻¹
 ISO 14396 _____ 210 kW / 282 hp at 1900 min⁻¹
 Maximum torque _____
 SAE J 1349, ISO 9249 _____ 988 N-m at 1500 min⁻¹
 ISO 14396 _____ 1020 N-m at 1500 min⁻¹

HYDRAULIC SYSTEM

Main pumps _____ 2 variable displacement axial piston pumps with
 regulating system
 Max. oil flow _____ 2 x 300 liter/min at 1900 min⁻¹
Working circuit pressure
 Boom/Arm/Bucket (MPa) _____ 34.3 - 37.3 with auto power boost
 Swing circuit (MPa) _____ 30.4
 Travel circuit (MPa) _____ 34.3
 Pilot pump (l/min) _____ 28.5
 Working circuit pressure (MPa) _____ 3.9
Boom Cylinders
 Bore (mm) _____ 145
 Stroke (mm) _____ 1495
Boom Positioning (2 piece boom only)
 Bore (mm) _____ 170
 Stroke (mm) _____ 1335
Arm Cylinder
 Bore (mm) _____ 170
 Stroke (mm) _____ 1748
Bucket Cylinder
 Bore (mm) _____ 150
 Stroke (mm) _____ 1210

PERFORMANCE DATA CX350D/CX370D

		Arm 3.25 m	Arm 2.20 m	Arm 2.63 m	Arm 4.05 m*
Boom length	mm	6450	6450	6450	6450
Bucket radius	mm	1680	1680	1680	1680
Bucket wrist action		173°	173°	173°	173°
A Maximum reach at GRP	mm	10980	9970	10450	11710
B Maximum reach	mm	11170	10180	10650	11900
C Max. digging depth	mm	7340	6300	6720	8140
D Max. digging height	mm	10380	9830	10280	10650
E Max. dumping height	mm	7240	6730	7110	7530
F Min. swing radius	mm	4510	4410	4440	4530

DIGGING FORCE (ISO 6015)

		Arm 3.25 m	Arm 2.20 m	Arm 2.63 m	Arm 4.05 m*
Arm digging force	kN	164.5	225.3	194.7	140.0
with Auto power boost	kN	178.8	245.0	211.7	152.2
Bucket digging force	kN	229.7	229.7	229.7	229.7
with Auto power boost	kN	249.8	249.8	249.8	249.8

*CX350D only

SWING

Swing Motor _____ Fixed displacement axial piston motor
 Maximum swing speed (min⁻¹) _____ 7,1
 Swing torque (Nm) _____ 112,000

FILTERS

Suction filter (µm) _____ 105
 Return filter (µm) _____ 6
 Pilot line filter (µm) _____ 8

ELECTRICAL SYSTEM

Voltage (V) _____ 24
 Alternator (Amp) _____ 90
 Starter (V/kW) _____ 24/5.0
 Battery _____ 2X12V - 128 Ah/5 HR

UNDERCARRIAGE

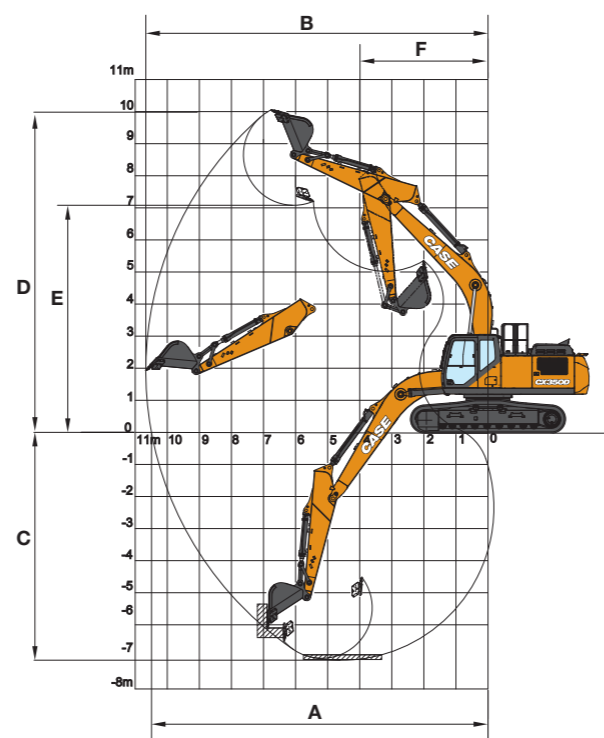
Travel motor _____ Variable displacement axial piston motor
 High travel speed (Automatic travel speed shifting) (km/h) _____ 5.7
 Low travel speed (km/h) _____ 3.4
 Drawbar pull (CX350D/CX370D) (kN) _____ 264 / 262
 Number of carrier rollers (each side) _____ 2
 Number of track rollers (each side) _____ 8
 Number of shoes (each side) _____ 48
 Type of shoes _____ Triple grouser shoes
 Grade ability _____ 70 % (35°)

SOUND LEVEL

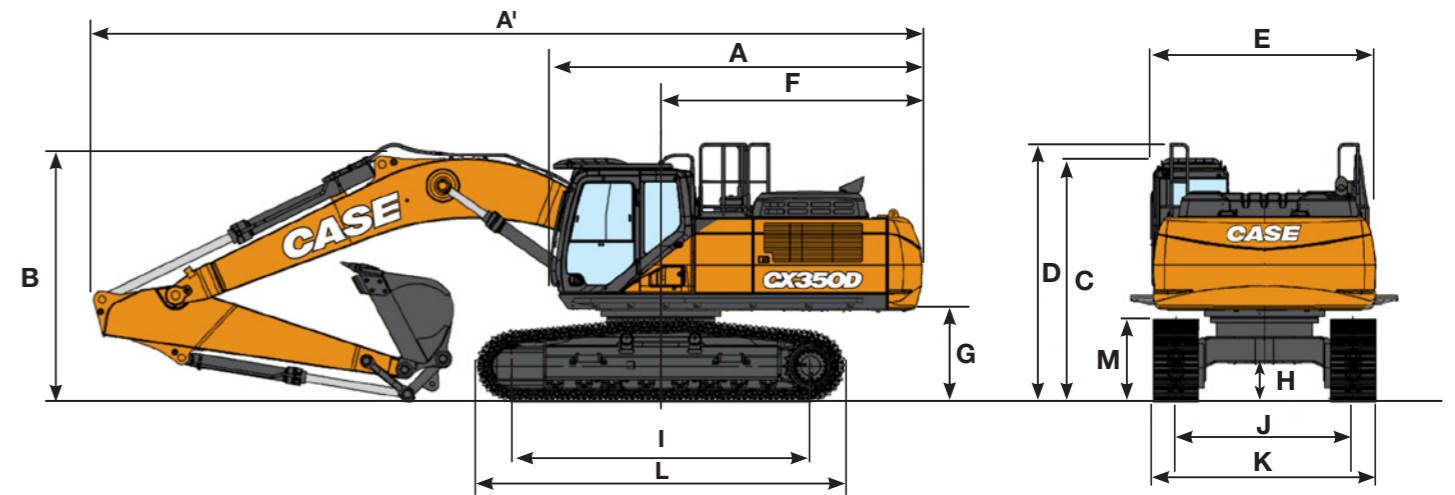
External guaranteed sound level
 (EU Directive 2000/14/EC) _____ LwA 105 dB(A)
 Operator cab sound pressure level (ISO 6396) _____ LpA 71 dB(A)

CIRCUIT AND COMPONENT CAPACITIES

Fuel tank (l) _____ 580
 Hydraulic system (l) _____ 350
 Hydraulic tank (l) _____ 175
 Adblue tank (l) _____ 152



GENERAL DIMENSIONS MONO LC-NLC



LC/NLC		Arm 3.25 m	Arm 2.20 m	Arm 2.63 m	Arm 4.05 m*
A Overall length (without attachment)	mm	6010	6010	6010	6010
A' Overall length (with attachment)	mm	11170	11250	11220	11190
B Overall height (to top of boom)	mm	3470	3620	3630	3620
C Cab height	mm	3260	3260	3260	3260
D Overall height (to top of hand rail)	mm	3360	3360	3360	3360
E Upper structure overall width (without catwalks)	mm	3030	3030	3030	3030
Upper structure overall width (with catwalks for LC)	mm	3590	3590	3590	3590
F Swing (rear end radius)	mm	3550	3550	3550	3550
G Clearance height under upper structure	mm	1210	1210	1210	1210
H Minimum ground clearance	mm	470	470	470	470
I Wheel base (Center to center of wheels)	mm	4040	4040	4040	4040
L Crawler overall length	mm	4980	4980	4980	4980
M Crawler tracks height	mm	1090	1090	1090	1090

LC		Arm 3.25 m	Arm 2.20 m	Arm 2.63 m	Arm 4.05 m*
J Track gauge	mm	2600	2600	2600	2600
K Undercarriage overall width (with 600 mm shoes)	mm	3200	3200	3200	3200

NLC		Arm 3.25 m	Arm 2.20 m	Arm 2.63 m	Arm 4.05 m*
J Track gauge	mm	2390	2390	2390	2390
K Undercarriage overall width (with 600 mm shoes)	mm	2990	2990	2990	2990

*CX350D only

WEIGHT AND GROUND PRESSURE CX350D

With 3.25 m Arm, 1.4 m³ Heavy Duty bucket, 600 mm grouser shoes, operator, fluids, full fuel tank, and FOPS level 2 guard.

CX350D LC	Weight	Ground pressure
	35800 kg	0.067 MPa
CX350D NLC	Weight	Ground pressure
	35700 kg	0.067 MPa

Counterweight 6400 kg

WEIGHT AND GROUND PRESSURE CX370D

With 3.25 m Heavy Duty Arm, 1.4 m³ Heavy Duty bucket, 600 mm grouser shoes, operator, fluids, full fuel tank, and FOPS level 2 guard.

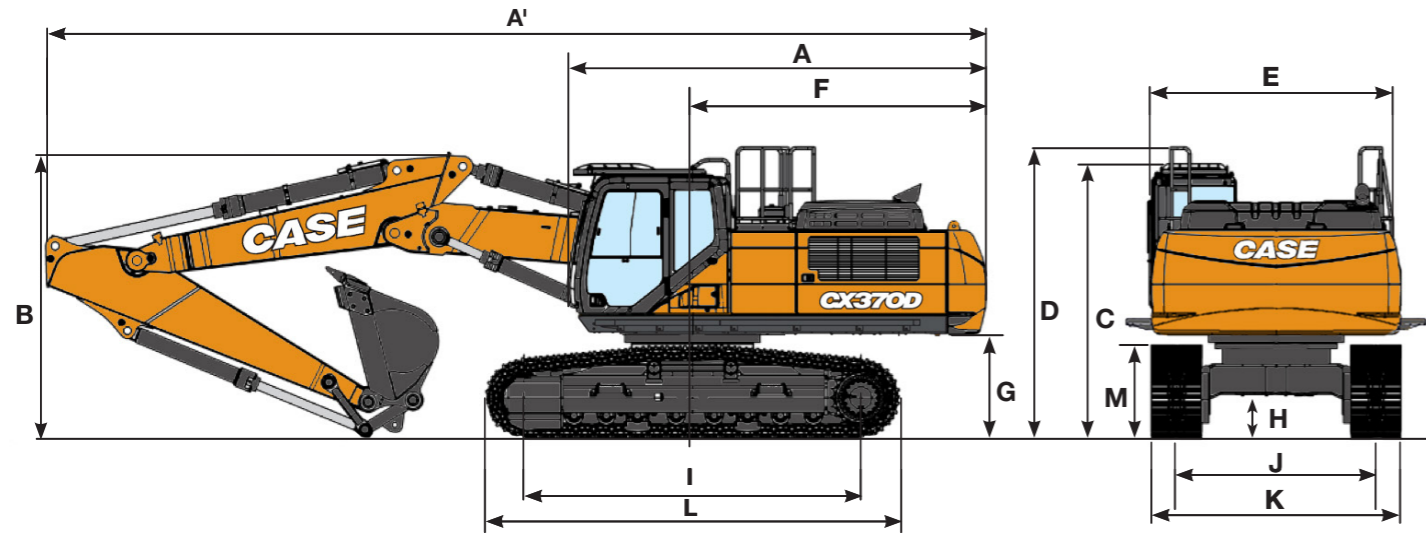
CX370D LC	Weight	Ground pressure
	38000 kg	0.071 MPa
CX370D NLC	Weight	Ground pressure
	37900 kg	0.071 MPa

Counterweight 7.400 kg

CX D-SERIES

CX370D 2 PIECE BOOM

GENERAL DIMENSIONS



LC/NLC		Arm 3.25 m	Arm 2.63 m	
A	Overall length (without attachment)	mm	6010	6010
A'	Overall length (with attachment)	mm	11270	11290
B	Overall height (to top of boom)	mm	3400	3400
C	Cab height	mm	3260	3260
D	Overall height (to top of hand rail)	mm	3360	3360
E	Upper structure overall width (without catwalks)	mm	3030	3030
	Upper structure overall width (with catwalks for LC)	mm	3590	3590
F	Swing (rear end radius)	mm	3550	3550
G	Clearance height under upper structure	mm	1210	1210
H	Minimum ground clearance	mm	470	470
I	Wheel base (Center to center of wheels)	mm	4040	4040
L	Crawler overall length	mm	4980	4980
M	Crawler tracks height	mm	1090	1090
J	Track gauge	mm	2600	2600
K	Undercarriage overall width (with 600 mm shoes)	mm	3200 / 2990	3200 / 2990

WEIGHT AND GROUND PRESSURE CX370D 2 PIECE BOOM

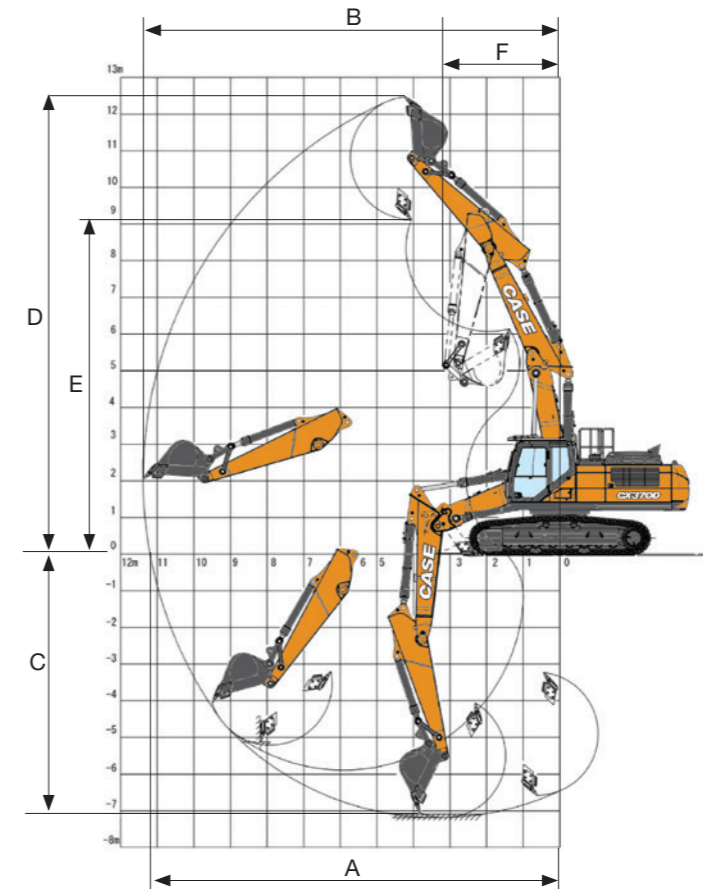
With 3.25 m Arm, 1.4 m³ Heavy Duty bucket, 600 mm grouser shoes, operator, fluids, full fuel tank, and FOPS level 2 guard.

CX370D LC	Weight	Ground pressure
	38100 kg	0.071 MPa

CX370D NLC	Weight	Ground pressure
	38000 kg	0.071 MPa

Counterweight 7400 kg

PERFORMANCE DATA



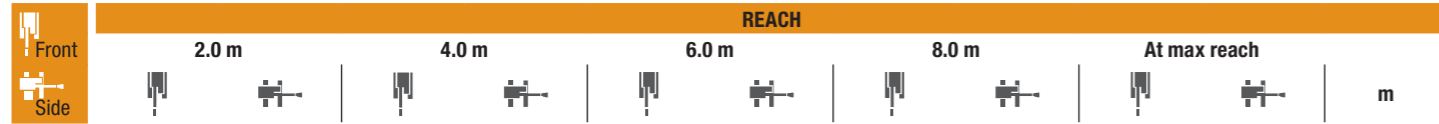
LC/NLC		Arm 3.25 m	Arm 2.63 m	
	1 st boom length	mm	3460	3460
	2 nd boom length	mm	3100	3100
	Bucket radius	mm	1680	1680
	Bucket wrist action	°	173	173
A	Maximum reach at GRP	mm	11200	10640
B	Maximum reach	mm	11390	10840
C	Max. digging depth	mm	7190	6600
D	Max. digging height	mm	12470	12110
E	Max. dumping height	mm	9130	8750
F	Min. swing radius	mm	3520	3520

DIGGING FORCE (ISO 6015)

		Arm 3.25 m	Arm 2.63 m
Arm digging force	kN	164.5	194.7
with Auto power boost	kN	178.8	245.0
Bucket digging force	kN	229.7	229.7
with Auto power boost	kN	249.8	249.8

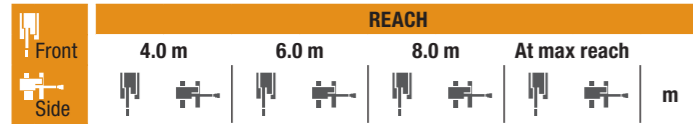
LIFTING CAPACITY

CX350D MONO



LC UNDERCARRIAGE - Standard arm 3.25 m, 600 mm shoes, max reach 9.49 m

Reach (m)	2.0 m	4.0 m	6.0 m	8.0 m	At max reach	
8.0 m					6740*	7.37
6.0 m				8680*	6690	8.62
4.0 m		16200*	16200*	11230*	9950	9.29
2.0 m		14670*	14670*	13260*	9200	9.49
0 m		15610*	15610*	13850	8710	9.26
-2.0 m	12600*	12600*	20870*	13670	8550	8.56
-4.0 m	23180*	23180*	17350*	16020	12140*	7.27



LC UNDERCARRIAGE - Short arm 2.63 m, 600 mm shoes, max reach 8.97 m

Reach (m)	4.0 m	6.0 m	8.0 m	At max reach	
8.0 m				9730*	6.68
6.0 m		10230*	9390*	6480	8.05
4.0 m		11930*	8900	6300	8.76
2.0 m		13710*	8970	6020	8.97
0 m		13700	8580	5820	8.73
-2.0 m	19540*	15690	13640	8520	7.98
-4.0 m	15300*	15300*	10760*	8830	6.57



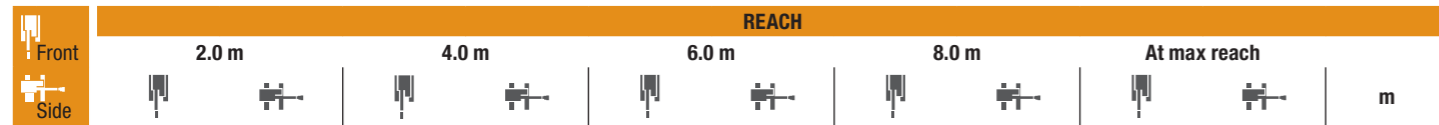
LC UNDERCARRIAGE - S-Short arm 2.20 m, 600 mm shoes, max reach 8.50 m

Reach (m)	4.0 m	6.0 m	8.0 m	At max reach	
8.0 m		10650*	10480*	10650*	6.04
6.0 m		10870*	10290	10070*	7.52
4.0 m		12490*	9620	6310	8.28
2.0 m		14110*	8970	6060	8.5
0 m		13770	8650	5920	8.25
-2.0 m	18570*	15950	13530*	8660	7.45
-4.0 m	13880*	13880*			5.91



LC UNDERCARRIAGE - Long arm 4.05 m, 600 mm shoes, max reach 10.20 m

Reach (m)	2.0 m	4.0 m	6.0 m	8.0 m	10.0 m	At max reach	
8.0 m				6160*	6160*	4960*	8.28
6.0 m				7660*	6760	4710*	9.42
4.0 m			9960*	9960*	8430*	6450	10.03
2.0 m		19200*	16750	12200*	9240	6060	10.22
0 m		17890*	15490	13750	8590	8880	10
-2.0 m	11300*	11300*	21500*	15220	13420	8300	9.36
-4.0 m	18830*	18830*	18900*	15430	12980*	8340	8.19
-6.0 m		13350*	13350*	8660*	8660*		6.19



NLC UNDERCARRIAGE - Standard arm 3.25 m, 600 mm shoes, max reach 9.49 m

Reach (m)	2.0 m	4.0 m	6.0 m	8.0 m	At max reach	
8.0 m					6740*	7.37
6.0 m				8680*	6190	8.62
4.0 m		16200*	16200*	11230*	9170	9.29
2.0 m		14670*	14670*	13260*	8430	9.49
0 m		15610*	14090	13820	7950	9.26
-2.0 m	12600*	12600*	20870*	14090	13640	8.56
-4.0 m	23180*	23180*	17350*	14430	12140*	7.27

* The above loads (kg) are compliant to the ISO standards and refer to the excavator equipped without bucket. The indicated loads are no more than 87% of hydraulic system lift capacity or 75% of static tipping load. Values marked with an asterisk (*) are limited by the hydraulic lifting capacity.



NLC UNDERCARRIAGE - Short arm 2.63 m, 600 mm shoes, max reach 8.97 m

Reach (m)	4.0 m	6.0 m	8.0 m	At max reach	
8.0 m				9730*	6.68
6.0 m		10230*	9580	9390*	8.05
4.0 m		11930*	8900	9460	8.76
2.0 m		13710*	8210	9150	8.97
0 m		13680	7820	8940	8.73
-2.0 m	19540*	14120	13610	7770	7.98
-4.0 m	15300*	14570	10760*	8070	6.57



NLC UNDERCARRIAGE - Long arm 4.05 m, 600 mm shoes, max reach 10.20 m

Reach (m)	2.0 m	4.0 m	6.0 m	8.0 m	10.0 m	At max reach	
8.0 m				6160*	6160*	4960*	8.28
6.0 m				7660*	6250	4710*	9.42
4.0 m			9960*	9320	8430*	5950	10.03
2.0 m		19200*	15120	12200*	8470	9220	10.22
0 m		17890*	13910	13720	7830	8860	10
-2.0 m	11300*	11300*	21500*	13650	13390	7550	9.36
-4.0 m	18830*	18830*	18990*	13860	12980*	7580	8.19
-6.0 m		13350*	13350*	8660*	8040		6.19

CX350D LC

HEAVY DUTY BUCKETS (DIRECT FIT)

CAPACITY m ³ (ISO7451 HEAPED)	WIDTH mm	WEIGHT kg	ARM 2.21 m	ARM 2.63 m	ARM 3.25 m	ARM 4.04 m
0.91	900	1220	○	○	○	○
1.19	1100	1340	○	○	○	○
1.33	1200	1440	○	○	○	●
1.54	1350	1540	○	○	●	▲
1.75	1500	1670	●	●	▲	■
2.03	1700	1830	●	▲	■	×

HEAVY DUTY BUCKETS (QUICK COUPLED)

CAPACITY m ³ (ISO7451 HEAPED)	WIDTH mm	WEIGHT kg	ARM 2.21 m	ARM 2.63 m	ARM 3.25 m	ARM 4.04 m
0.91	900	1220	○	○	○	○
1.19	1100	1340	○	○	○	●
1.33	1200	1440	○	○	●	▲
1.54	1350	1540	●	●	▲	■
1.75	1500	1670	●	▲	■	×
2.03	1700	1830	■	■	×	×

ROCK BUCKETS (DIRECT FIT)

CAPACITY m ³ (ISO7451 HEAPED)	WIDTH mm	WEIGHT kg	ARM 2.21 m	ARM 2.63 m	ARM 3.25 m	ARM 4.04 m
0.92	900	1310	○	○	○	○
1.19	1100	1440	○	○	○	○
1.34	1200	1550	○	○	○	●
1.56	1350	1650	○	○	●	▲
1.78	1500	1800	●	●	▲	■
2.03	1700	1970	▲	▲	■	×

ROCK BUCKETS (QUICK COUPLED)

CAPACITY m ³ (ISO7451 HEAPED)	WIDTH mm	WEIGHT kg	ARM 2.21 m	ARM 2.63 m	ARM 3.25 m	ARM 4.04 m
0.92	900	1310	○	○	○	○
1.19	1100	1440	○	○	○	○
1.34	1200	1550	○	○	●	▲
1.56	1350	1650	●	●	▲	■
1.78	1500	1800	▲	▲	■	×
2.03	1700	1970	■	■	×	×

CX350D NLC

HEAVY DUTY BUCKETS (DIRECT FIT)

CAPACITY m ³ (ISO7451 HEAPED)	WIDTH mm	WEIGHT kg	ARM 2.21 m	ARM 2.63 m	ARM 3.25 m	ARM 4.04 m
0.91	900	1220	○	○	○	○
1.19	1100	1340	○	○	○	○
1.33	1200	1440	○	○	○	●
1.54	1350	1540	○	●	●	■
1.75	1500	1670	●	▲	■	×
2.03	1700	1830	▲	■	×	×

ROCK BUCKETS (DIRECT FIT)

CAPACITY m ³ (ISO7451 HEAPED)	WIDTH mm	WEIGHT kg	ARM 2.21 m	ARM 2.63 m	ARM 3.25 m	ARM 4.04 m
0.92	900	1310	○	○	○	○
1.19	1100	1440	○	○	○	●
1.34	1200	1550	○	○	○	▲
1.56	1350	1650	○	●	●	■
1.78	1500	1800	●	▲	■	×
2.03	1700	1970	▲	■	×	×

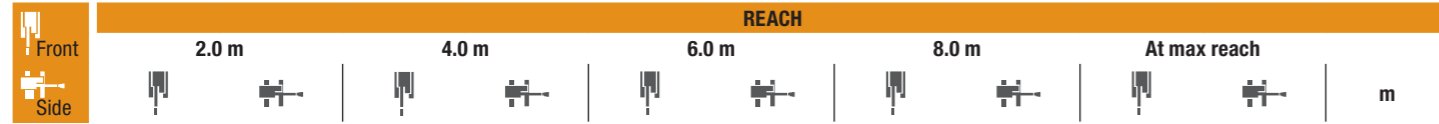
○ Rated material density up to 2 ton/m³ ● Rated material density up to 1.6 ton/m³ ▲ Rated material density up to 1.4 ton/m³
 ■ Rated material density up to 1.2 ton/m³ × Not applicable

LIFTING CAPACITY

CX370D MONO

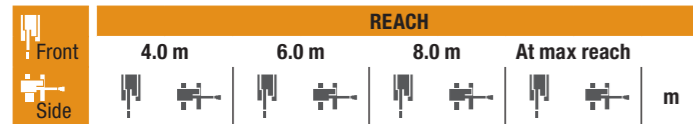
LIFTING CAPACITY

CX370D 2 PIECE BOOM



LC UNDERCARRIAGE - Standard arm 3.25 m, 600 mm shoes, max reach 9.49 m

Height (m)	2.0 m	4.0 m	6.0 m	8.0 m	At max reach	Reach (m)
8.0 m						6670*
6.0 m				8430*	7070	6270*
4.0 m		15840*	15840*	10940*	10540	9010*
2.0 m		14610*	14610*	12890*	9710	9770
0 m		15540*	15540*	14010*	9160	9480
-2.0 m	12520*	12520*	20280*	16530	13800*	9000
-4.0 m	23110*	23110*	16800*	16800*	11740*	9180



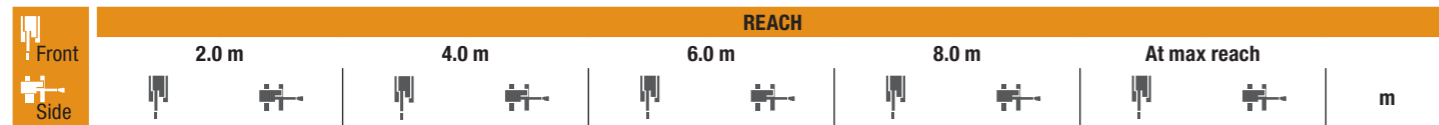
LC UNDERCARRIAGE Short arm 2.63 m, 600 mm shoes, max reach 8.97 m

Height (m)	4.0 m	6.0 m	8.0 m	At max reach	Reach (m)
8.0 m					9680*
6.0 m		10130*	10130*	9270*	6960
4.0 m		11800*	10400	9610*	6770
2.0 m		13550*	9660	9790	6480
0 m		14290*	9240	9570	6270
-2.0 m	19270*	16890	13590*	9180	9550*
-4.0 m	15060*	15060*	10570*	9490	9060*



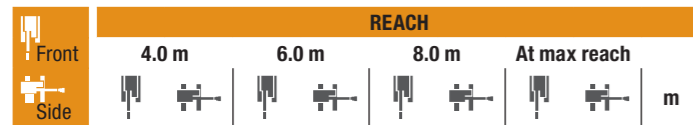
LC UNDERCARRIAGE S-Short arm 2.20 m, 600 mm shoes, max reach 8.50 m

Height (m)	4.0 m	6.0 m	8.0 m	At max reach	Reach (m)
8.0 m					10540*
6.0 m		10760*	10760*		9940*
4.0 m		12360*	10340	10020*	6770
2.0 m		13930*	9650	9830	6520
0 m		14390*	9310	9660	6360
-2.0 m	18300*	17140	13330*	9320	10250*
-4.0 m	13630*	13630*			9520*



NLC UNDERCARRIAGE - Standard arm 3.25 m, 600 mm shoes, max reach 9.49 m

Height (m)	2.0 m	4.0 m	6.0 m	8.0 m	At max reach	Reach (m)
8.0 m						6670*
6.0 m				8430*	6550	6270*
4.0 m		15840*	15840*	10940*	9720	9010*
2.0 m		14610*	14610*	12890*	8900	9750
0 m		15540*	14860	14010*	8370	9460
-2.0 m	12520*	12520*	20280*	14870	13800*	8210
-4.0 m	23110*	23110*	16800*	15260	11740*	8380



NLC UNDERCARRIAGE Short arm 2.63 m, 600 mm shoes, max reach 8.97 m

Height (m)	4.0 m	6.0 m	8.0 m	At max reach	Reach (m)
8.0 m					9680*
6.0 m		10130*	10130*	9270*	6440
4.0 m		11800*	9580	9610*	6250
2.0 m		13550*	8860	9770	5960
0 m		14290*	8450	9550	5760
-2.0 m	19270*	15220	13590*	8390	9550*
-4.0 m	15060*	15060*	10570*	8690	9060*



NLC UNDERCARRIAGE S-Short arm 2.20 m, 600 mm shoes, max reach 8.50 m

Height (m)	4.0 m	6.0 m	8.0 m	At max reach	Reach (m)
8.0 m					10540*
6.0 m		10760*	10210		9940*
4.0 m		12360*	9520	10020*	6260
2.0 m		13930*	8850	9810	6000
0 m		14390*	8510	9640	5850
-2.0 m	18300*	15470	13330*	8520	10250*
-4.0 m	13630*	13630*			9520*



LC UNDERCARRIAGE - Standard arm 3.25 m, 600 mm shoes, max reach 9.71 m

Height (m)	0.0 m	2.0 m	4.0 m	6.0 m	8.0 m	At max reach	Reach (m)
8.0 m							8200*
6.0 m							8570*
4.0 m				18620*	18620*	9910*	9780*
2.0 m		16890*	16890*	21150*	18990	12320*	10710*
0 m		20110	20110	21730*	18650	14060*	10280
-2.0 m	20410*	20410*	28440*	28440*	22160*	17750	14180*
-4.0 m	19960*	19960*	36330*	36330*	20250*	17700	22830*

LC UNDERCARRIAGE - Short arm 2.63 m, 600 mm shoes, max reach 9.16 m

Height (m)	4.0 m	6.0 m	8.0 m	At max reach	Reach (m)
10.0 m					12540*
8.0 m					12540*
6.0 m					8860*
4.0 m					8860*
2.0 m					7850*
0 m					7850*
-2.0 m	19200*	19200*	33470*	33470*	22130*
-4.0 m			35040*	35040*	17730*

NLC UNDERCARRIAGE - Standard arm 3.25 m, 600 mm shoes, max reach 9.71 m

Height (m)	0.0 m	2.0 m	4.0 m	6.0 m	8.0 m	At max reach	Reach (m)
8.0 m							8200*
6.0 m							8570*
4.0 m				18620*	18010	9910*	9890
2.0 m		16890*	16890*	21150*	17320	12320*	10220
0 m		20110*	20110*	21730*	16800	14060*	9400
-2.0 m	20410*	20410*	28440*	28440*	22130*	15930	14180*
-4.0 m	19960*	19960*	36330*	36330*	20250*	15880	22830*

NLC UNDERCARRIAGE - Short arm 2.63 m, 600 mm shoes, max reach 9.16 m

Height (m)	4.0 m	6.0 m	8.0 m	At max reach	Reach (m)
10.0 m					12540*
8.0 m					12540*
6.0 m					8860*
4.0 m					8860*
2.0 m					7850*
0 m					7850*
-2.0 m	19200*	19200*	33470*	33470*	22130*
-4.0 m			35040*	35040*	17730*

* The above loads (kg) are compliant to the ISO standards and refer to the excavator equipped without bucket. The indicated loads are no more than 87% of hydraulic system lift capacity or 75% of static tipping load. Values marked with an asterisk (*) are limited by the hydraulic lifting capacity.

* The above loads (kg) are compliant to the ISO standards and refer to the excavator equipped without bucket. The indicated loads are no more than 87% of hydraulic system lift capacity or 75% of static tipping load. Values marked with an asterisk (*) are limited by the hydraulic lifting capacity.

BUCKETS

CX370D MONO

CX370D LC

HEAVY DUTY BUCKETS (DIRECT FIT)

CAPACITY m ³ (ISO7451 HEAPED)	WIDTH mm	WEIGHT kg	ARM 2.21 m	ARM 2.63 m	ARM 3.25 m
0.91	900	1220	○	○	○
1.19	1100	1340	○	○	○
1.33	1200	1440	○	○	○
1.54	1350	1540	○	○	○
1.75	1500	1670	○	○	●
2.03	1700	1830	●	●	▲
2.17	1800	1900	●	▲	■

ROCK BUCKETS (DIRECT FIT)

CAPACITY m ³ (ISO7451 HEAPED)	WIDTH mm	WEIGHT kg	ARM 2.21 m	ARM 2.63 m	ARM 3.25 m
0.92	900	1310	○	○	○
1.19	1100	1440	○	○	○
1.34	1200	1550	○	○	○
1.56	1350	1650	○	○	○
1.78	1500	1800	○	○	●
2.03	1700	1970	●	●	▲
2.18	1800	2070	●	▲	■

CX370D NLC

HEAVY DUTY BUCKETS (DIRECT FIT)

CAPACITY m ³ (ISO7451 HEAPED)	WIDTH mm	WEIGHT kg	ARM 2.21 m	ARM 2.63 m	ARM 3.25 m
0.91	900	1220	○	○	○
1.19	1100	1340	○	○	○
1.33	1200	1440	○	○	○
1.54	1350	1540	○	○	●
1.75	1500	1670	○	●	▲
2.03	1700	1830	●	▲	■
2.17	1800	1900	▲	■	×

ROCK BUCKETS (DIRECT FIT)

CAPACITY m ³ (ISO7451 HEAPED)	WIDTH mm	WEIGHT kg	ARM 2.21 m	ARM 2.63 m	ARM 3.25 m
0.92	900	1310	○	○	○
1.19	1100	1440	○	○	○
1.34	1200	1550	○	○	○
1.56	1350	1650	○	○	●
1.78	1500	1800	○	●	▲
2.03	1700	1970	●	▲	■
2.18	1800	2070	▲	■	×

HEAVY DUTY BUCKETS (QUICK COUPLED)

CAPACITY m ³ (ISO7451 HEAPED)	WIDTH mm	WEIGHT kg	ARM 2.21 m	ARM 2.63 m	ARM 3.25 m
0.91	900	1220	○	○	○
1.19	1100	1340	○	○	○
1.33	1200	1440	○	○	○
1.54	1350	1540	○	○	●
1.75	1500	1670	○	●	▲
2.03	1700	1830	●	▲	■
2.17	1800	1900	▲	■	×

ROCK BUCKETS (QUICK COUPLED)

CAPACITY m ³ (ISO7451 HEAPED)	WIDTH mm	WEIGHT kg	ARM 2.21 m	ARM 2.63 m	ARM 3.25 m
0.92	900	1310	○	○	○
1.19	1100	1440	○	○	○
1.34	1200	1550	○	○	○
1.56	1350	1650	○	○	●
1.78	1500	1800	●	●	■
2.03	1700	1970	●	■	×
2.18	1800	2070	▲	■	×

HEAVY DUTY BUCKETS (QUICK COUPLED)

CAPACITY m ³ (ISO7451 HEAPED)	WIDTH mm	WEIGHT kg	ARM 2.21 m	ARM 2.63 m	ARM 3.25 m
0.92	900	1310	○	○	○
1.19	1100	1440	○	○	○
1.34	1200	1550	○	○	●
1.56	1350	1650	○	●	▲
1.78	1500	1800	●	▲	■
2.03	1700	1970	▲	■	×
2.18	1800	2070	■	×	×

ROCK BUCKETS (QUICK COUPLED)

CAPACITY m ³ (ISO7451 HEAPED)	WIDTH mm	WEIGHT kg	ARM 2.21 m	ARM 2.63 m	ARM 3.25 m
0.92	900	1310	○	○	○
1.19	1100	1440	○	○	○
1.34	1200	1550	○	○	●
1.56	1350	1650	○	●	■
1.78	1500	1800	●	■	×
2.03	1700	1970	▲	■	×
2.18	1800	2070	■	×	×

BUCKETS

CX370D 2 PIECE BOOM

CX370D LC

HEAVY DUTY BUCKETS (DIRECT FIT)

CAPACITY m ³ (ISO7451 HEAPED)	WIDTH mm	WEIGHT kg	ARM 2.63 m	ARM 3.25 m
0.91	900	1220	○	○
1.19	1100	1340	○	○
1.33	1200	1440	○	○
1.54	1350	1540	○	○
1.75	1500	1670	●	●
2.03	1700	1830	●	▲
2.17	1800	1900	▲	■

ROCK BUCKETS (DIRECT FIT)

CAPACITY m ³ (ISO7451 HEAPED)	WIDTH mm	WEIGHT kg	ARM 2.63 m	ARM 3.25 m
0.92	900	1310	○	○
1.19	1100	1440	○	○
1.34	1200	1550	○	○
1.56	1350	1650	○	●
1.78	1500	1800	●	●
2.03	1700	1970	▲	■

CX370D NLC

HEAVY DUTY BUCKETS (DIRECT FIT)

CAPACITY m ³ (ISO7451 HEAPED)	WIDTH mm	WEIGHT kg	ARM 2.63 m	ARM 3.25 m
0.91	900	1220	○	○
1.19	1100	1340	○	○
1.33	1200	1440	○	○
1.54	1350	1540	○	●
1.75	1500	1670	●	▲
2.03	1700	1830	▲	■
2.17	1800	1900	■	×

ROCK BUCKETS (DIRECT FIT)

CAPACITY m ³ (ISO7451 HEAPED)	WIDTH mm	WEIGHT kg	ARM 2.63 m	ARM 3.25 m
0.92	900	1310	○	○
1.19	1100	1440	○	○
1.34	1200	1550	○	○
1.56	1350	1650	●	●
1.78	1500	1800	●	■
2.03	1700	1970	■	×

HEAVY DUTY BUCKETS (QUICK COUPLED)

CAPACITY m ³ (ISO7451 HEAPED)	WIDTH mm	WEIGHT kg	ARM 2.63 m	ARM 3.25 m
0.91	900	1220	○	○
1.19	1100	1340	○	○
1.33	1200	1440	○	○
1.54	1350	1540	●	●
1.75	1500	1670	▲	■
2.03	1700	1830	■	×

ROCK BUCKETS (QUICK COUPLED)

CAPACITY m ³ (ISO7451 HEAPED)	WIDTH mm	WEIGHT kg	ARM 2.63 m	ARM 3.25 m
0.92	900	1310	○	○
1.19	1100	1440	○	○
1.34	1200	1550	○	●
1.56	1350	1650	●	▲
1.78	1500	1800	▲	■
2.03	1700	1970	■	×

HEAVY DUTY BUCKETS (QUICK COUPLED)

CAPACITY m ³ (ISO7451 HEAPED)	WIDTH mm	WEIGHT kg	ARM 2.63 m	ARM 3.25 m
0.91	900	1220	○	○
1.19	1100	1340	○	●
1.33	1200	1440	●	●
1.54	1350	1540	▲	■
1.75	1500	1670	■	×

ROCK BUCKETS (QUICK COUPLED)

CAPACITY m ³ (ISO7451 HEAPED)	WIDTH mm	WEIGHT kg	ARM 2.63 m	ARM 3.25 m
0.92	900	1310	○	○
1.19	1100	1440	○	●
1.34	1200	1550	●	▲
1.56	1350	1650	▲	■
1.78	1500	1800	■	×