

**D-SERIES CRAWLER EXCAVATORS**  
**CX350D / CX370D / CX370D 2 PIECE BOOM**  
**STAGE V**

**CASE**  
CONSTRUCTION



**IT'S TIME**  
**FOR MORE**

[www.casece.com](http://www.casece.com)  
**EXPERTS FOR THE REAL WORLD**  
**SINCE 1842**

# HERITAGE

## A TRADITION OF INDUSTRY FIRSTS



# CRAWLER EXCAVATORS D-SERIES

## BUILT TO LAST AND CONTROL



### EXPERTS FOR THE REAL WORLD

#### SINCE 1842

- 1842** CASE is founded.
- 1869** The first CASE portable steam engine - road construction is born.
- 1957** The first factory - integrated loader/backhoe in the world: a CASE industry first.
- 1969** CASE begins skid steer loader production.
- 1992** Sumitomo becomes supplier to CASE Corporation distributing excavators ranging from 7 to 80 tons.
- 1998** Global Alliance signed

- between CASE Corporation and Sumitomo.
- 2001** CASE introduces the first of its CX excavators, powerful new "thinking machines" designed to enhance productivity through onboard intelligence features.
- 2007** CX210B is awarded the «Good Design Award» by the design Academy of Japan.
- 2008** CX210B wins the 18<sup>th</sup> «Energy Conservation Award» from the Agency for Natural Resources and Energy of the Japanese

- Ministry of Economy.
- 2011** CASE becomes the first construction equipment manufacturer to offer both selective catalytic reduction and cooled exhaust gas recirculation as solutions to meet stringent emissions standards.
- 2015** CASE launches the new "D-Series" Tier 4 final/ EU Stage IV Crawler Excavators.
- 2018** Stage V production for models CX350D and above.



### HIGH RELIABILITY

Improved D-esign for D-urable performances

- The boom and arm have been re-designed according to the latest stress analysis criteria, to reduce stress points while maintaining weight optimization to ensure the best lifting performance.
- New high strength casting parts with joined hinge flanges reduce stress and increase durability.
- The undercarriage has been re-designed and re-shaped to facilitate the welding process, enhancing the reliability of the fabricated structures.
- The one-side-slope lower frame design reduces the time needed to clean the undercarriage.
- The thickness of the structural plates has been increased, especially in those parts where a high level of protection is required for components.

### HIGH QUALITY

Accurate, simple and robust design for high durability

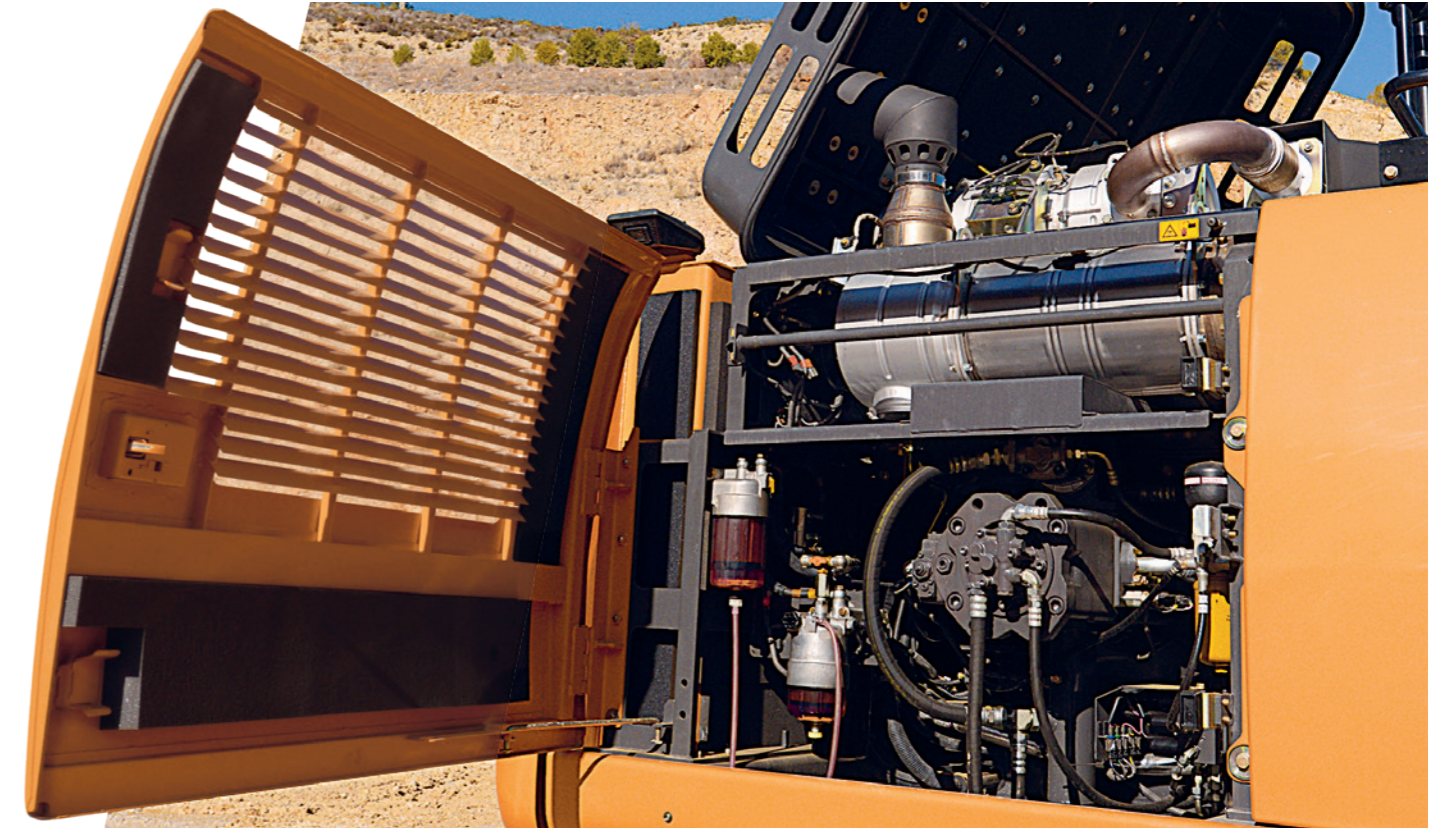
- True to CASE's enviable reputation for reliability and durability, the D-Series delivers leading design solutions and manufacturing quality.
- Wide choice of arm solutions.
- Standard heavy duty boom and arm on the CX370D.



### HIGH PRECISION AND CONTROLLABILITY

Smooth control with the CASE Intelligent Hydraulic System

The proven CASE Intelligent Hydraulic System (CIHS) delivers energy savings in all cycle time phases (digging, boom up and swing, dumping).



## HIGH VERSATILITY

Mono or 2 Piece Boom: choice is yours!

- CX350D Mono with 4 arms options.
- CX370D Mono with 3 Heavy Duty arms options.
- A brand new specific CX370D 2-Piece Boom version is now available to provide greater performance when working closer to the machine is needed.

Working modes easily adapt to every work load

The familiar **working mode systems** offers 3 power modes to match different customer needs.

- A** MODE: for grading, lifting and precision work.
- H** MODE: the best balance between productivity and fuel economy.
- SP** MODE: extra speed and power for the most demanding jobs that require maximum productivity.

**Auto Power boost** automatically increases hydraulic pressure according to the operation's demands.



## FAST CYCLES

High Performance Hydraulics control

- The new electrically controlled pumps and a bigger main control valve deliver faster cycle times.
- Oil flow can be adjusted according to working needs, or increased smoothly while starting travel and boom down.
- As a result, the machine responsiveness to operation load is multiplied, resulting in cycle times up to 12% faster than the previous generation.
- CASE adds a Variable Geometry Turbocharger to ensure a fast transient response of the engine while minimizing fluid consumption.



## HIGH EFFICIENCY: THE SECRET

Great performances with low fuel consumption

**CASE Intelligent Hydraulic System (CIHS)** reads continuously the load pressure through strategic sensors and like an ORCHESTRA DIRECTOR gives always and in real time the right balance for any type of job, providing solid fuel saving opportunities. It consists of 6 Energy Saving controls:

- Torque control decreases main pump loads to prevent a drop in engine rpm.
- Boom Economy Control (BEC) increased fuel efficiency during boom lower and swing operations.
- Swing Relief Control (SWC) carefully manages the hydraulic power distribution in slewing operations.
- Spool Stroke Control (SSC) creates an automatic pressure adjustment during digging and leveling operations.
- The Auto Idle and the Idle Shutdown functions avoid unnecessary fuel consumption.
- Boom Oil Regeneration (BOR) uses the boom down movement to make arm opening faster with pump power saving.



## CLEANER (STAGE V)

EU Stage V compliant CASE engines

- The new STAGE V engine meets the latest EU standards for engine exhaust emissions that sets new limit for particle number (PN) and further reduced particulate matter (PM) levels.
- Water separator sensor linked to a dedicated message on machine monitor to drain water when level in filter is too high.
- New safety filter (maintenance free) to protect the engine from dust during the main filter replacement.
- The closed circuit ventilation system makes sure the oil gas are filtered, separated and sent back to the crankcase, avoiding dispersion into the air.
- The engine of the latest generation, electronically controlled with Variable Geometry Turbocharger, high pressure common rail with multi-injection ensures great performances and low fuel consumption.
- Largest AdBlue tank in the industry allows longer working time without stopping for AdBlue refill (8-10 fuel refills before a stop). With CASE no time is wasted and your refill is more efficient and safe.



## COMFORTABLE AND SAFE CAB

Ergonomic seat design and spacious cab

- Superior cab structure with ample legroom for the operator.
- Fully adjustable workstation.
- New ergonomically designed highback seat with air suspension for excellent comfort, plus seat tilting adjustment and seat heater.
- Top class features include 178 mm colour LED monitor, Bluetooth tuner and DAB+ radio, spacious storage compartment, 12V accessory plug, clipboard holder, mobile phone holder, warm and cool box, fuse box service connection, storage tray and ergonomic arm rest.
- Reinforced structure of the cab compliant with ROPS/FOPS requirements.
- Standard head protection approved to FOPS level 2.
- Optional front guards level 1 and 2
- Factory fitted travel alarm for greater safety on the jobsite around the machine.



## OUTSTANDING VISIBILITY & QUIET WORK ENVIRONMENT

- Outstanding visibility with ample glazed surface, right and rear camera.
- Soundproof pressurised cab.
- The cushioning system lowers noise and vibration levels for the operator's ultimate comfort.



# D-SERIES CRAWLER EXCAVATORS

# SAFETY AND MAINTENANCE WORK SAFELY IN ALL CONDITIONS



## CASE MAXIMUM VIEW MONITOR

option with its bird's eye and panoramic view improves operator's safety by:

- 270° wide vision.
- 3 cameras.
- 7 inch full color monitor.
- Blind spots eliminated by image processing.
- Led lighting package LED lights for increased visibility in low light conditions.
- Safety on the jobsite around the machine.



## HEAVY DUTY APPLICATION

### CX370D MONO

- The mono version CX370D is equipped as standard with heavier counterweight, full track guide and a special heavy duty attachment, HD boom & HD arm with reinforcement plate and bars on the bottom side with high-tensile strength steel for long term durability to work in the toughest heavy duty applications.



## SAFE ACCESS TO UPPERCARRIAGE

### Solid and robust platform and handrails

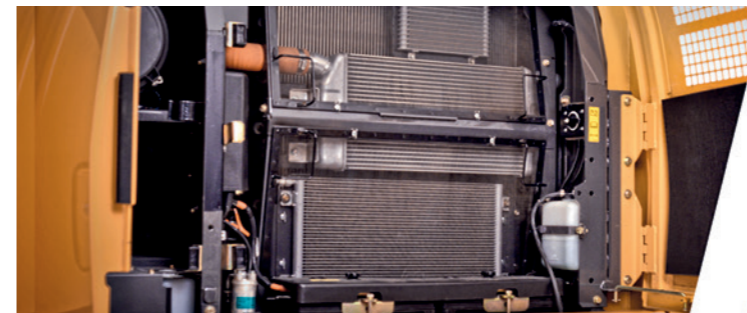
- Wide, robust and comfortable steps or safe access to the top of the hood.
- Solid handrail for protection on the top of the hood.
- Non slip-plates and top hood cover supported by 2 gas pistons and secured by 2 mechanical stops when open.
- A wide platform (up to 60 cm) on top of the engine compartment to work safely on the engine box.



## EASY MAINTENANCE

### CASE stays «grounded»

- All filters and regular fill points are grouped for easy access.
- Engine oil change intervals set at 500 hours.
- Radiator and cooler cores mounted side by side for easy access for cleaning and more efficient cooling.
- Standard 100 l/min refueling pump with automatic cut off reduces downtime for regular fills.
- Optional hydraulic and engine oil sampling port accessible at ground level for easy oil check.
- Battery shutdown switch for safe maintenance on the electrical system.
- All the D-Series crawler excavators feature the Extended Maintenance System (EMS) bushings, providing 1,000 hour greasing intervals on all pins except the attachment linkage.



# MAIN REASONS TO CHOOSE THE D-SERIES



## THE SECRET FOR HIGH PRECISION AND CONTROLLABILITY

is the CASE Intelligent Hydraulics System (CIHS) which is the result of continuous pursuit of perfection of a legendary brand. CASE is synonymous and reference in the market for its fastest cycles times, best energy saving performance and smooth control



## HIGH EFFICIENCY

- Energy saving system to take advantage of all fuel saving opportunities: up to 8% more fuel efficiency
- Largest AdBlue tank in the industry (152 litres). Your refill is more efficient and safe



## HIGH VERSATILITY

- With the 2-PIECE BOOM optional version available on CX370D, CASE can now offer extra versatility
- 3 available power modes to match customers needs (A, H, SP)
- Auto Power boost job-sensing hydraulic pressure increase



## FAST CYCLES

- New electronically controlled hydraulic pumps
- New larger main valve



## HIGH RELIABILITY

Reliability and durability thanks to the new redesigned arm, boom and undercarriage



## SAFE OPERATION AND MAINTENANCE

- New fuel filter supply line with no need to flush after filter replacement: thanks to a safety filter (maintenance free)
- Fuel prefilter water sensor with dedicated message on cabin monitor
- Standard extended handrails
- Factory fitted travel alarm
- Maintenance points grouped for easy and safe access



## OUTSTANDING VISIBILITY

- Wide glazed area
- Rear and side view cameras
- Large LED monitor
- LED lighting package



## SMOOTH RIDE, QUIET WORK ENVIRONMENT

- Cab with cushioning system
- Low noise and vibration



## COMFORTABLE AND SAFE CAB

- ROPS cab and FOPS level 2
- Extra spacious cab
- Fully adjustable workstation
- New high back seat



## STAGE V ENGINE

in line with the latest EU standard for engine exhaust emissions

- new ATS with DPD filter (Diesel Particulate Diffuser)
- new closed PCV system (Positive Crankcase Ventilation)



# AFTERSALES PRODUCTS AND SERVICES

# STANDARD AND OPTIONS

## AFTERSALES PRODUCTS

Keep your equipment performing at its best and protect your investment's value with the extensive offering of high-quality CASE Parts.

### Genuine Parts HIGH PERFORMANCE

Optimize your performance and add value to your machine with high-quality genuine parts.



Ensure your machine's performance beyond warranty and manage your budget with CASE's quality second-line range of parts.

### Attachments. BUSINESS SOLUTIONS

Add versatility to performance with CASE attachments designed for CASE machines and tested by CASE engineers.

### Reman-Parts REMANUFACTURED

Choose sustainable quality with remanufactured parts designed for CASE equipment of all ages.

## SERVICE SOLUTIONS

Enjoy the peace of mind of knowing CASE Service Solutions will keep your equipment in top condition with maximum uptime, no unexpected costs, and help you optimize your profitability.



## STANDARD EQUIPMENT

### ENGINE

- Isuzu 6-cylinder turbo-charged diesel EU stage V certified
- Selective Catalytic Reduction (SCR)
- Diesel Oxidation Catalyst (DOC)
- Cooled Exhaust Gas Recirculation (CEGR)
- Diesel Particulate Diffuser (DPD)
- VGT turbocharger
- Electronic fuel injection
- High pressure common rail system
- Neutral safety start
- Auto-engine warm up, emergency stop
- Glow-plug pre-heat
- Engine Protection Feature (EPF)
- Dual-stage fuel filtration
- Dual element air filter
- Remote oil filter
- Green plug oil drain
- 500-hour engine oil change interval
- 24V system
- Battery disconnect switch
- External fuel and AdBlue gauges
- Fuel cooler
- Fuel filter restriction indicator
- Fuel prefilter water sensor with dedicated message on cabin monitor
- Idle start
- Radiator, oil cooler, intercooler – protective screen
- Refueling pump

### FUEL ECONOMY SYSTEMS

- Engine Idle/Fuel Economy System:
- Auto-idle
- One-touch idle
- Auto-idle shut-down
- Torque control
- Boom Economy Control (BEC)
- Swing Relief Control (SWC)
- Spool Stroke Control (SSC)

### HYDRAULICS

- Electronically controlled hydraulic pumps
- Auto power boost

## OPTIONAL EQUIPMENT

### HYDRAULICS

- Low-flow circuit, proportional control

### ATTACHMENTS

- Arm - 2.20/2.63/4.05 m (CX350D)
- Arm - 2.63 m (CX370D 2PB)
- HD arm - 2.20/2.63 m (CX370D)

- Multifunction (hammer/high flow) circuit with electrical proportional control
- Auto travel speed change
- Selectable work modes
- Overload warning device
- ISO pattern controls
- Pre-set auxiliary pump settings
- Switch controlled auxiliary selection
- Auxiliary valve
- Hydraulic filter restriction indicator
- Oil cooler
- 5,000 hour hydraulic oil change interval
- 2,000 hour hydraulic filter change interval

### UPPERSTRUCTURE

- ISO mirrors
- Handrail – RH access
- Isolation mounted cab (fluid and spring)
- Lifting eyes for counterweight
- Lockable fuel cap, service doors and toolbox
- Rear and side view safety camera

### OPERATOR STATION

- ROPS protection
- FOPS guard OPG level 2
- Pressurized cab
- Tempered safety glass
- One-touch lock front window
- Sun visor&rain deflector
- AC/heat/defrost w/auto climate control
- Hot&coolbox, cup holder & ashtray
- Interior dome light
- Cloth covered air-suspension high-back seat
- Sliding seat – 90 mm
- Seat-belt
- Adjustable armrests
- Tilting consoles - 4-position
- Low-effort joystick controls

- Sliding cockpit 180 mm
- Auxiliary select system
- Aux-in port for personal electronics
- Multifunction LED color monitor (180 mm)
- 26 selectable languages for monitor

### OPERATOR STATION

- Front cab guard - vertical bars (OPG level 2)
- Front cab guard - vertical bars (OPG level 1)
- CASE Maximum View Monitor - 270° view with additional left side camera

### UPPERSTRUCTURE

- Catwalks (LC only)
- Hydraulic and engine oil sampling ports

- Anti-theft system (start code system)
- Rubber floor mat
- 12V electric socket
- 24V cigarette lighter
- One-piece right hand window
- Windshield wiper / washer
- Clear (Lexan) roof window w/sunshade
- Storage compartments
- On-board diagnostic system
- Travel alarm
- DAB+ radio with antenna and 2-speakers
- 8 LED work lights (2 cab roof, 1 LH boom, 1 toolbox, 4 all-around)

### ATTACHMENTS

- Standard boom 6.45 m (CX350D)
- HD boom 6.45 m (CX370D)
- Arm 3.25 m (CX350D)
- HD arm 3.25 m (CX370D) with reinforcement plate and bars
- Auxiliary pipe brackets with guard bar
- Centralized lube bank
- Attachment cushion valve
- Hydraulic quick coupler provision
- Safety valves and bucket linkage with hook
- FOR 2PB**
- 1<sup>st</sup> boom 3.46 m
- 2<sup>nd</sup> boom 3.1 m
- Arm 3.25 m

### UNDERCARRIAGE

- 600 mm steel triple grouser shoes
- Full overlap turntable bearing tub
- Sealed link chain
- Lashing points
- Double track guide (CX350D/CX370D 2PB)
- Full track guide (CX370D MONO)

### TELEMATICS

- 7 years myCASEConstruction subscription with remote monitoring

### UNDERCARRIAGE

- 700 mm steel triple grouser shoes
- 800 mm steel triple grouser shoes
- 900 mm steel triple grouser shoes (only for CX350D LC)
- Full track guide (CX350D/CX370D 2PB)
- Double track guide (CX370D MONO)