

Wheel Loaders

G+ SERIES

521G+ | 621G+ | 651G+
721G+ | 821G+ | 921G+



CASE
CONSTRUCTION

G+ WHEEL LOADERS: PRODUCTIVITY, EFFICIENCY, SAFETY

INTRODUCING THE NEW G+ SERIES WHEEL LOADERS

G+: The Plus You Can Feel!

The CASE G Evolution Wheel Loaders just got better.

More comfort. More safety. More tech. That's the Plus.

Get ready to take a step forward for the best experience with upgraded G+ Series Wheel Loaders.

G+ is more than evolution.. It's PLUS!



YOUR EQUIPMENT, YOUR PARTNER

SIX GOOD REASONS TO CHOOSE CASE WHEEL LOADERS



1 SUSTAINABLE POWER

- FPT NEF 6.7 litres (4.5 litres on 521G+), compliant with EU Stage V regulation;
- Turbocharged with variable geometry turbo;
- Hi-pressure common rail electronic injection;
- Hi-eSCR2 exclusive after treatment system, EGRfree;
- HVO diesel and XTL synthetic oils compatible.

2 POWERFUL DRIVELINE

- 4-Speed transmission, 5-Speed available;
- Proportional transmission cut-off (power inch): smooth approach; uphill climbing without roll-back; torque converter lock-up for faster acceleration and power loss reduction on 5-speed version;
- Heavy duty axles standard: different combination of front/rear axle differential and multiplesintered bronze brake disk.

3 EASE OF OPERATION

- Automated Loader functions with CLICK & DIG;
- Intuitive multifunction touch-screen display;
- Easy boom setup and automatic bucket positioning;
- Three customizable buttons on right console for easy screen page recall;
- Integrated payload scale with tip-off function available;
- Tire pressure monitoring.

4 CHAMPION OF EFFICIENCY

- High efficiency “cube design” cooling system allows fresh air to pass through all radiators at the same time without overlaps;
- Optimal weight distribution thanks to rear-positioned engine, resulting in higher loading capacity without increase in operating weight = high productivity with less fuel consumption.

5 ENHANCED CONNECTIVITY

- Continuous monitoring of machine health parameters by a team of experts through the SiteConnect module;
- Remote diagnosis and control units updates possible through SiteManager app;
- Easy fleet management through MYCASEConstruction portal, including payload report directly to your desk computer from the machine via telematics.

6 MAXIMIZED UPTIME

- All maintenance and refill points in the engine compartment easily reachable from the ground;
- Service intervals at 1000 hours and multiples for reduced maintenance costs.;
- Service alerts generated when maintenance interval is about to expire;
- CaseCare and CaseProtect programs available for full peace-of-mind.

CLICK & DIG SYSTEM: AUTOMATED POWER, OPERATOR CONTROL

BOOST PRODUCTIVITY AND EASE OF USE

WITH CASE G+ CLICK & DIG AUTOMATED LOADER FUNCTIONS

- Maximum bucket fill, no calibration needed;
- Consistent performance for all operators;
- Enhanced safety and reduced fatigue;
- Optimized power use for fuel and tire savings.



AUTOMATIC DIG FUNCTION

One click starts a full loading cycle - move, fill, reverse - no pedals or extra controls needed.



AUTOMATIC DUMP FUNCTION

At set boom height, the same trigger dumps the bucket with a shake and auto return-to-dig.



AUTOMATIC METERING FUNCTION

Below horizontal boom angle, trigger activates bucket shake for even material spread.

GET COMFY AND MOVE THE WORLD

ALL FUNCTIONALITIES AT YOUR FINGERTIP

The operator's comfort and safety are top priorities for CASE and that's why all its wheel loaders are equipped with a spacious ROPS/FOPS level 2 certified cab, letting you get on with the job at hand untroubled.

TOUCHSCREEN DISPLAY

The touchscreen display gives operators full control of machine functions and settings, with new features designed to enhance the driving experience.

INTEGRATED WEIGH LOAD SCALE

Track every bucket load with the integrated payload scale and create complete job tickets with all key details. Send reports instantly to your desk via MYCASEConstruction telematics for faster, smarter job management.

BEST-IN-CLASS VISIBILITY

Optimal visibility is ensured by:

- One-piece design windshield;
- High efficiency lighting;
- Wide angle rear-view camera (standard);
- Follow-me-home LED lights with customizable lights-on duration.

TIRE PRESSURE MONITORING

Optional Tire Pressure Monitoring, accessible via the touchscreen, keeps tire status under control—optimizing pressure, reducing wear, and extending tire life.

SUPERIOR COMFORT

- Seat mounted console;

- Configurable buttons to quickly recall on the display the most frequently used screens;

- Hands-free calling kit;

- Multiple storage areas.

YOUR SAFETY PARTNER

INNOVATIVE FEATURES IN EVERY DETAIL

From advanced seating systems to external safety monitoring, rear-view assistance and obstacle detection: the new G+ Series integrates cutting-edge features to protect operators and enhance job site control.



NEW OPERATOR SEATS

Both standard and Premium seats air suspended, heated and ventilated. Premium seat with 3-points high vis seatbelt, leather coated, auto weight adjustment and low frequency vibration damper.



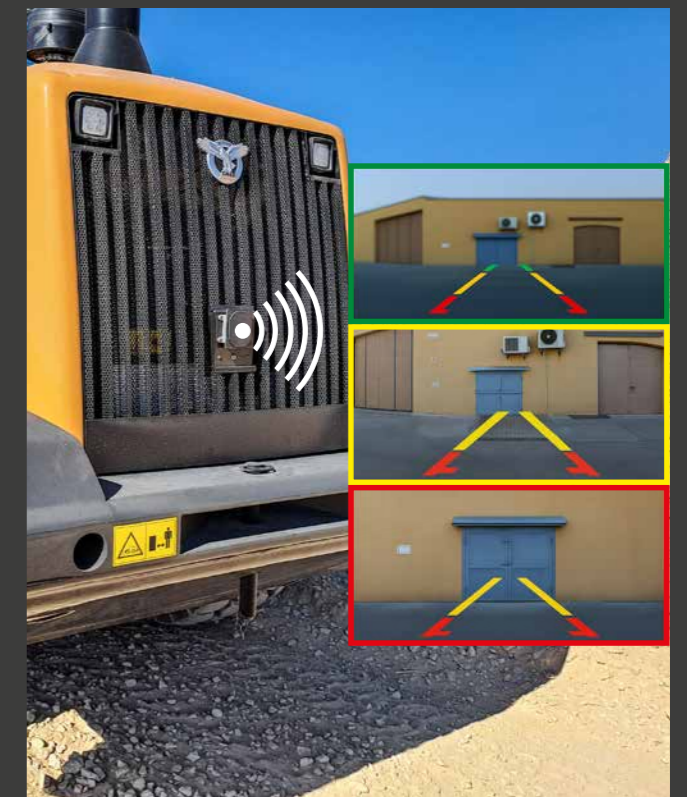
NEW EXTERNAL SEATBELT INDICATOR LIGHT

To inform the jobsite supervisor that every operator is working in safe condition.



NEW REAR-VIEW MIRROR OPTION

Heated and electrically adjustable, also provided with egress light illuminating the cab access steps.

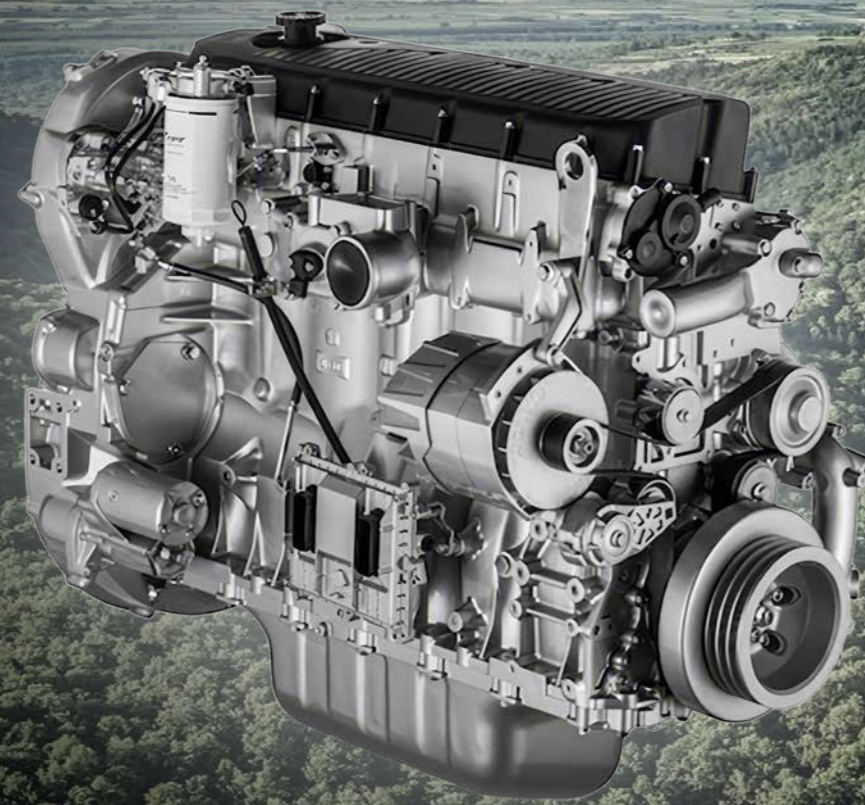


NEW REAR OBJECT DETECTOR

Provides visual and audible alerts as the distance to a rear obstacle becomes critical.

CLEANER, GREENER POWER.

SUSTAINABILITY CHANGES THE WORLD



CASE wheel loaders feature advanced engine technology developed by our sister company, FPT Industrial.

Pioneering low-emission, high-efficiency solutions, FPT brings you the competitive advantage of powertrain technologies, reliably delivering high performance with low operating costs.



EU stage V compliant, with exclusive HieSCR2 after treatment system, without EGR, built for life and maintenance free.



FPT Cursor9, 8.7 liters, turbocharged, with variable geometry turbo for optimal pressure stability. Multiple injection high pressure common rail engines.



EGR-free for optimized combustion, resulting in high fuel efficiency in every condition.



Compatible with HVO and all other XTL synthetic fuels (CTL, BTL, GTL) for flexible, sustainable fuel solutions.



Exclusive CASE Cooling Cube design: no radiators overlap ensures high cooling efficiency for the best protection of the entire driveline resulting in reduced TCO.

MAINTAIN TOP PERFORMANCE

OUTSTANDING AFTER SALES SERVICES

Keep your equipment performing at its best and protect your investment's value with the extensive offering of high-quality CASE Parts.

Genuine Parts HIGH PERFORMANCE

Optimize your performance and add value to your machine with high-quality genuine parts.

Attachments BUSINESS SOLUTIONS

Add versatility to performance with CASE attachments designed for CASE machines and tested by CASE engineers.

FLEETPRO

Ensure your machine's performance beyond warranty and manage your budget with CASE's quality second-line range of parts.

Reman Parts REMANUFACTURED

Choose sustainable quality with remanufactured parts designed for CASE equipment of all ages.

CASE **ServiceSolutions**

Enjoy the peace of mind of knowing CASE Service Solutions will keep your equipment in top condition with maximum uptime, no unexpected costs, and help you optimize your profitability.



CASE CARE

Maximize your machine's uptime and efficiency with this planned maintenance program.



CASE PROTECT

Avoid unexpected costs with this extended warranty program.



CASE FLUID ANALYSIS

Ensure your machine's uptime with detailed fluid reporting.



myCASEConstruction

Puts the power of centralized fleet management in your hands - through a single, easy-to-use portal and mobile app.



CASE SITECONNECT

Connects your Dealer to your machine for remote support.

